



# Strengthened Connections between Community Priorities & Resilient Infrastructure

*Climate Adaptation Forum 2023*

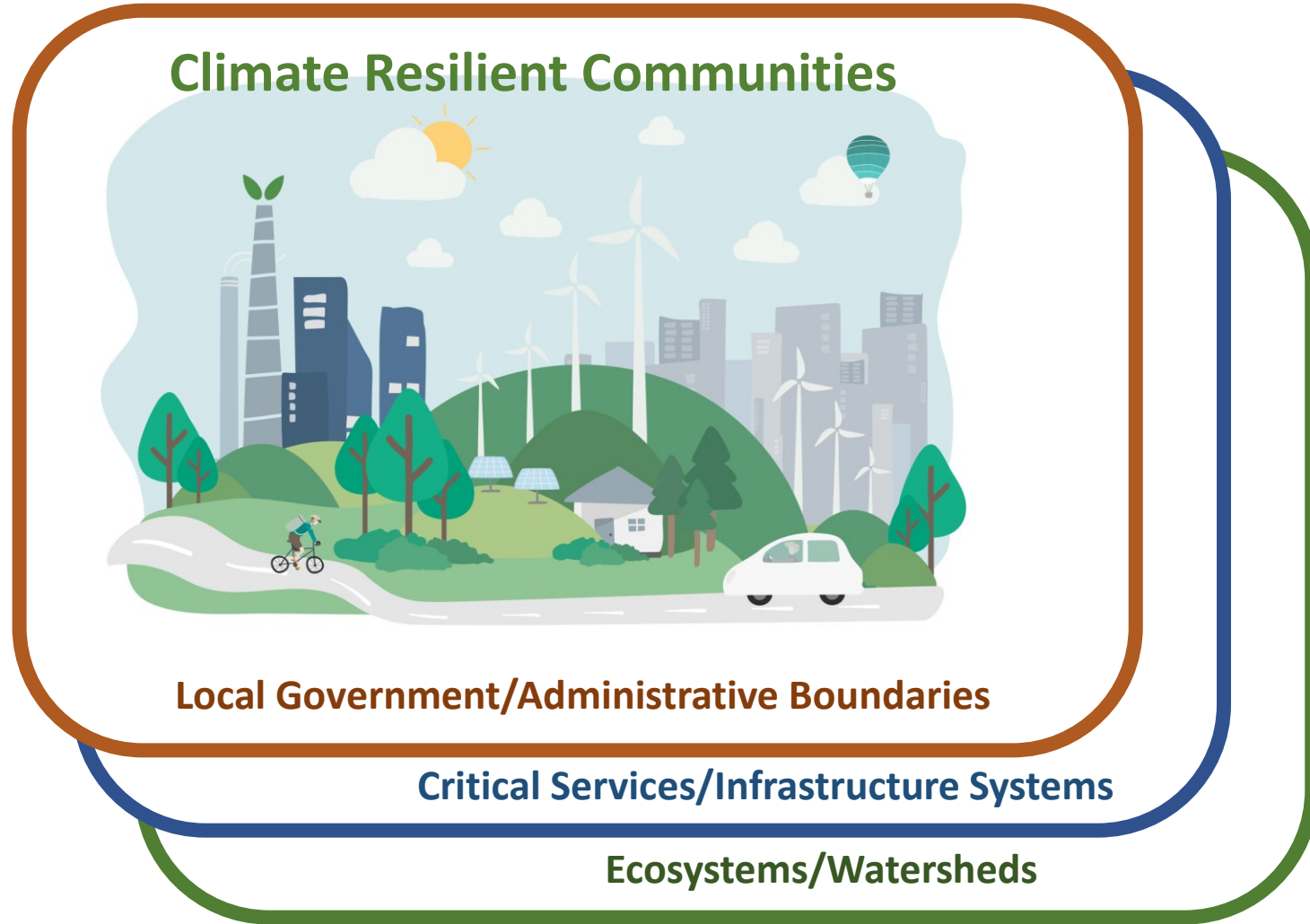
*Panel Discussion*

*Tuesday, August 1<sup>st</sup>, 2:30 to 3:30 PM*

# Mitigation climate change while adapting to evolving conditions

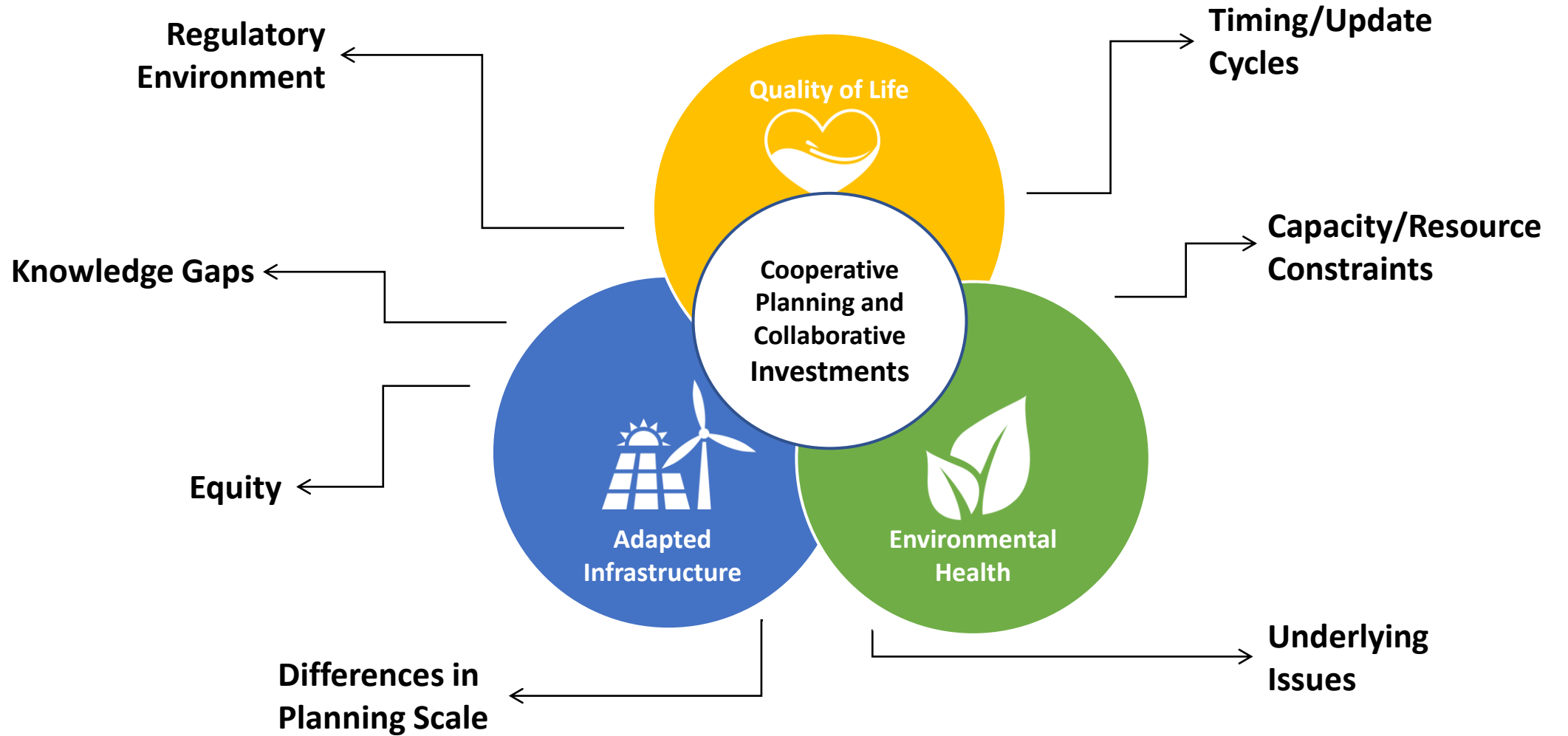


# Interdependent but disconnected plans and investments





# Key Coordination and Collaboration Issues





# Panel Discussion

## Strengthened Connections between Community Priorities & Resilient Infrastructure

*Moderator*



**Eric Vaughan**  
*Senior Planner*  
Rincon Consultants

*Panelists*



**Liz Crosson**  
*Chief Sustainability, Resilience,  
and Innovations Officer*  
Metropolitan Water District of  
Southern California



**Erica Bowman**  
*Managing Director of  
Regulatory Policy*  
Southern California Edison



**Melani Smith**  
*Director of Regional  
Development*  
Gateway Cities Council of  
Governments



**Jonathan Parfrey**  
*Executive Director*  
Climate Resolve



## Question 1

As a critical service provider, describe your approach to assessing climate vulnerabilities, developing adaptation approaches, and implementing adaptation strategies?

# SCE's Climate Adaptation Work Aligned with Major Federal Developments



**Infrastructure Investment and Jobs Act (IJIA)** unlocks \$1.2 trillion in infrastructure grant opportunities, with an emphasis on climate resilience and equity

**Climate Adaptation and Vulnerability Assessment (CAVA)** released by SCE as a first-of-its kind utility look into 2030-2070 grid impacts across 50,000-square-mile service area



Thought-leadership paper on need to prioritize climate resilience planning, investments, and partnerships published by Edison



**Inflation Reduction Act (IRA)** sparks a paradigm shift in climate, by spurring >50% emissions reduction compared to 2005 levels and committing \$369\* billion in climate resilience investments.

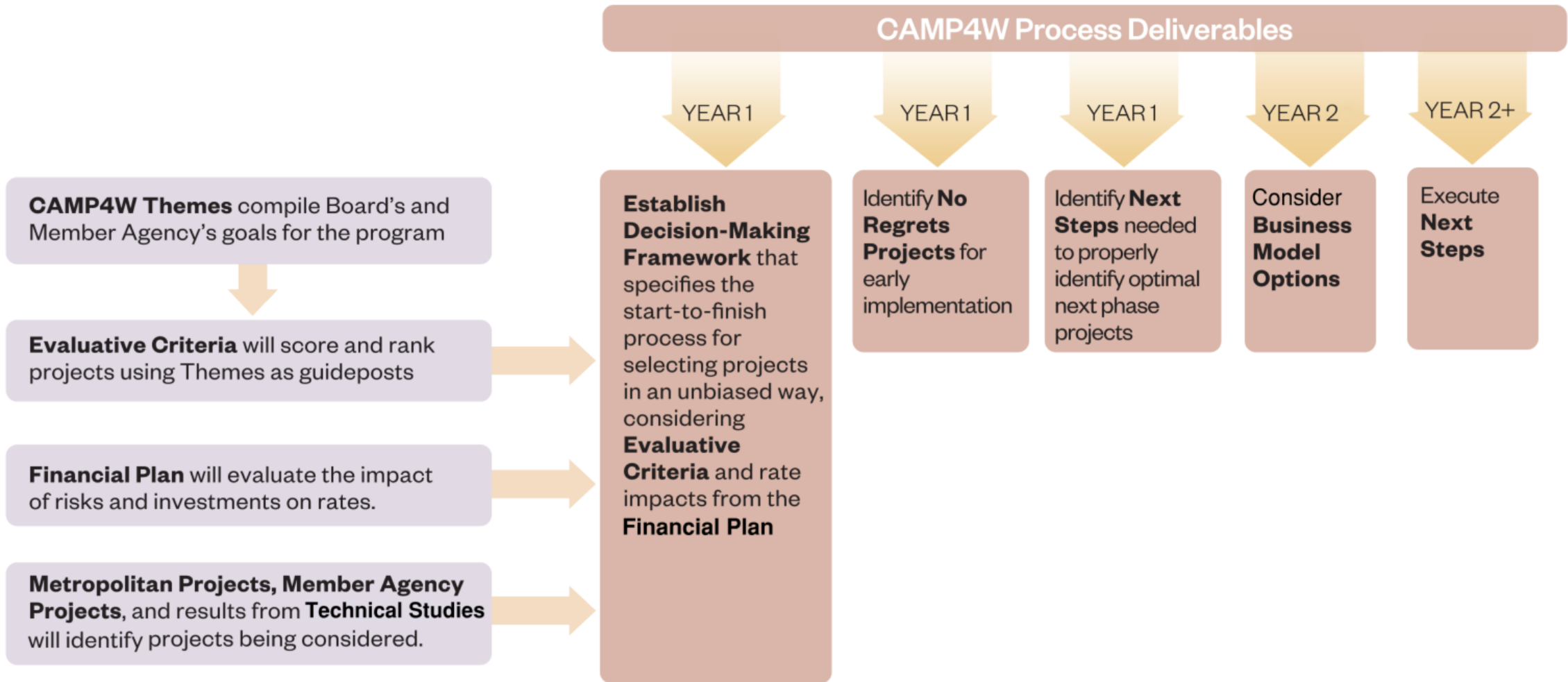
**SCE's General Rate Case (GRC) filing** proposes ~\$115m in climate-informed investments identified by using CAVA findings.

Reliable	Resilient	Ready
Improve the reliability of the grid so SCE can meet customers' needs today and, in the future	Deploy programs that protect the safety of customers and the public	Ensure the grid is ready to support widespread electrification and decarbonization

\* [Resilience.org](https://www.resilience.org)



# MWD Climate Adaptation Master Plan for Water (CAMP4W)

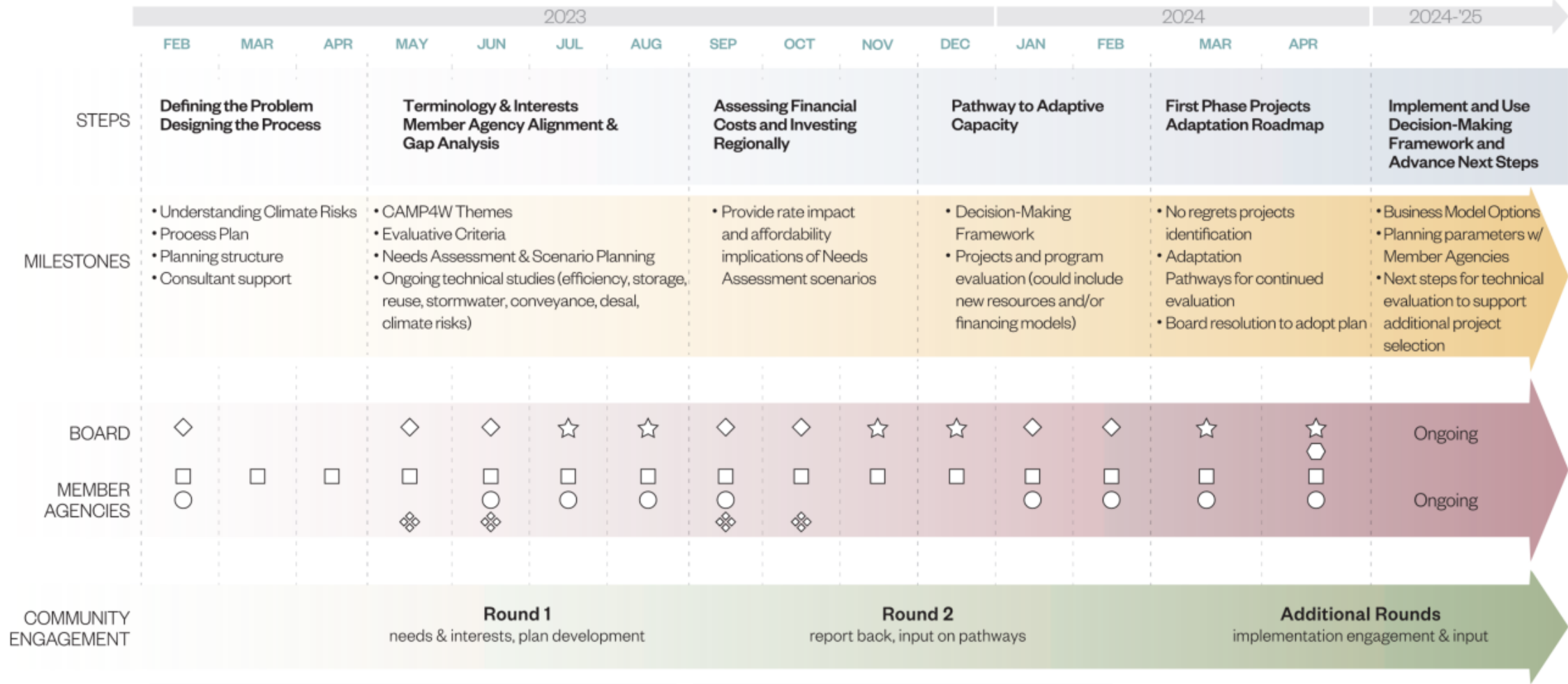






DRAFT

# Climate Adaptation Master Plan for Water: Timeline & Framework



### Board Member and Agency Engagement

- ◇ Board Workshop
- ☆ Board Committee Discussion
- Member Agency Managers Meeting
- Board Meeting
- CAMP Focused MAMM
- ◇ Questionnaire

### Types of Community Engagement

- Listening Session
- Community-led Session
- Technical Charette
- Technical Advisory Group



# MWD CAMP4W Development (2023-24)

## Define the Problem & Process

- Identify Climate Vulnerabilities
- Align leadership on reliability, resilience, financial sustainability & affordability

## Assess Climate Impacts

- Identify water resources gap in a changing climate and apply scenario planning
- Develop evaluative criteria

## Assess Financial Impacts

- Assess rate impacts
- Discuss revenue models
- Address affordability

## Evaluate Adaptation Strategies

- Project and program evaluation
- Identify low regrets projects

## Implement, Track, Adjust

- Establish climate adaptation decision making framework
- Continuing evaluation and implementation



## Question 2

What are your insights on the successes and challenges that communities are having in assessing climate vulnerabilities, developing adaptation approaches and implementing adaptation strategies?

**Ounce of Prevention**  
**Advancing Equitable Climate**  
**Resilience Planning in California**  
status report on implementation  
of Senate Bill 379 (2015)



April 14, 2023



## Have jurisdictions complied with SB 379?

- Only half of California Jurisdictions have updated their Safety Elements to address climate change
- Most non-compliant jurisdictions lacked the financial and staff resources to engage in planning

## What climate planning approach proved most effective?

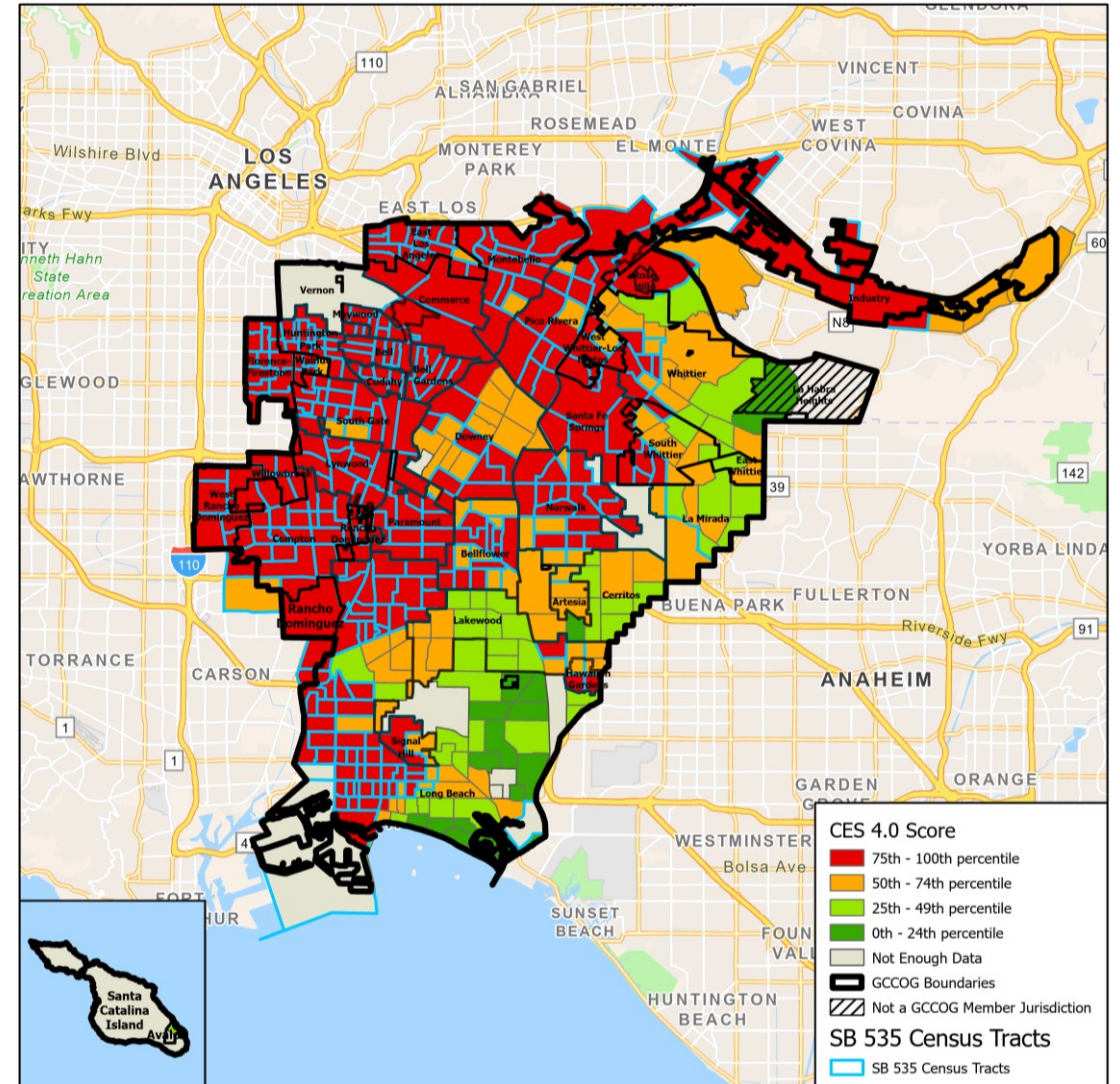
- Stand-alone adaptation plans have the potential to lead to transformative implementation projects
- LHMP updates are cost efficient approach for SB379 compliance but have limitations
- Forming trusted relationships with community leaders is important to integrating community values into climate adaptation planning

# Gateway Cities COG

Voluntary JPA in southeast Los Angeles County comprised of 27 member cities, and parts of the unincorporated County with over 2 million population

## Four Policy Emphasis Areas:

- Air Quality/Climate
- Transportation
- Economic Development
- Homelessness & Housing





## CLIMATE FUNDING READINESS

### Gateway Cities Climate Action Opportunity Assessment and Readiness Plan: Building Capacity for Disadvantaged Communities

The Gateway Cities COG received a Transformative Climate Communities planning grant from the Strategic Growth Council to develop a regional Climate Action Opportunity Assessment and prepare Readiness Plans to assist member jurisdictions in applying for state climate investment programs to fund projects that reduce greenhouse gas emissions. Cities receive assistance in identifying multiple-benefit sustainability projects and programs that can be eligible for climate investment funding. The project team will help a select number of cities with promising projects to develop a plan to increase readiness and compete for funding programs.

### Climate Action Planning Framework

**RESOURCES**

**DATA**

- Gateway Cities GHG Inventories and Forecasts
- GHG Emissions Tracker
- Gateway Cities Climate Action Tracking Tool

**TOOLKITS**

- GHG Reduction Measure Toolkit
- Climate Change Adaptation Toolkit
- Public Engagement Toolkit

**GUIDANCE**

- CAP Framework User Guide (PDF)
- Model Climate Action Plan
- CEQA and Target Setting
- Implementation Funding and Financing

#### PROJECT FACTSHEET



#### CAP-AND-TRADE INFOGRAPHIC

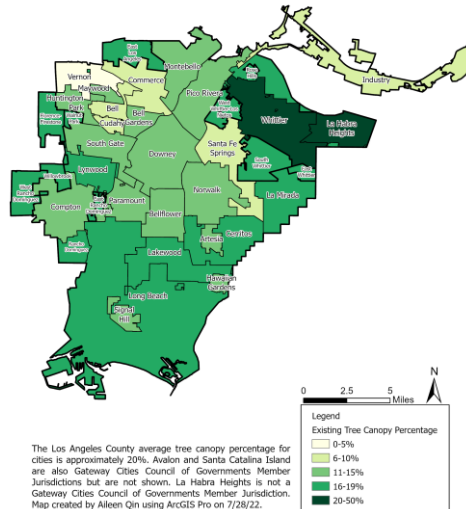


#### CAP-AND-TRADE PROGRAMS SHEET

City/Jurisdiction	Name	Category	Priority	Estimated Cost	Estimated GHG Reduction	Estimated Jobs Created	Estimated Jobs Retained	Estimated Jobs Lost	Estimated Jobs Net
...	...	...	...	...	...	...	...	...	...

### Gateway Cities Tree Canopy

Source: Tree People and Loyola Marymount University



GATEWAY CITIES COUNCIL OF GOVERNMENTS

### URBAN TREE CANOPY COMMUNITY PRIORITIZATION

#### What is the Urban Tree Community Prioritization Project?

The Gateway Cities Council of Governments (COG) in collaboration with Loyola Marymount University's Center of Urban Resilience and TreePeople received a \$200,000 grant from the California Resilience Challenge (CRC) through the Bay Area Council to develop local-level urban tree canopy assessments along with a community engagement and prioritization component in four cities: Paramount, Vernon, Lynwood, and Montebello. Through the prioritization process, communities will set urban tree canopy priorities for their city. The Urban Tree Community Prioritization Project will produce analyses, reports, and maps to empower the four participating Gateway communities to increase their urban canopy, re-duce climate change impacts due to extreme heat, and enhance social, economic and public health.

#### Participating Cities



#### Project Schedule





### Gateway Cities Council of Governments and Climate Change

As climate change continues to transform the lives of residents in Los Angeles County, the region is coming to grips with its environmental effects, including record-breaking temperatures, longer droughts, and more intense wildfires. These issues stress the County's communities, infrastructures, health, and essential natural resources. Climate projections indicate that the destructive effects of climate change are only expected to grow more severe in the coming decades.

One area of Los Angeles County that is particularly vulnerable to these harmful effects is encompassed by the Gateway Cities Council of Governments (COG). The Gateway Cities COG is the coordinating organization for Southeast Los Angeles County and is one of several jurisdictional subregions that divide the county. The Gateway Cities COG comprises 27 cities in Southeast LA, representing 2.1 million people. Three-quarters of the residents in the Gateway Cities COG reside in census tracts that have been classified by CalEPA as "disadvantaged." These disadvantaged tracts are largely composed of urban low-income communities of color, specifically Black and Latinx residents



Although climate change impacts everyone, disadvantaged communities disproportionately bear the brunt of climate change burdens, and are much less resilient to it than other communities. When compared with broader Los Angeles County, households in the Gateway Cities COG fare worse on a broad range of metrics. Gateway Cities have lower median household income, lower high school and college graduation rates, and higher unemployment rates. The Gateway Cities COG has a higher overall Pollution Burden Score - a measure of potential pollutant exposure and harmful environmental conditions - than the County average. Additionally, residents in the Gateway Cities COG have a higher per capita number of asthma and cardiovascular-related ER visits than their counterparts in greater Los Angeles County while having lower health insurance rates. These health disparities are the result of a combination of factors, including pollution exposure from highways and goods movement, a concentration of emitters, overcrowded housing as well as a history of systemic racism, housing discrimination, segregation, and a lack of resources.



### The City of Bell Gardens is developing a Community Resilience Center!

It will offer community support during extreme high temperatures or power outages



### What is a Community Resilience Center?

- A gathering space for the community
- A cooling center during a heat wave
- A power source to charge electronic devices during a power outage
- A shelter with food and resources during an emergency

The center will be self-sufficient with on-site energy and supplies. We need your help in creating a familiar and safe space for you and your family to gather! Please take our survey below.

### Take our survey to win a raffle prize!

Let us know what you and your family need at your Community Resilience Center. Scan the QR code to complete the short survey and be entered to win a RAFFLE PRIZE! Raffle prizes include a \$25 or \$50 Visa gift card and Energy Efficiency Gift Basket.

Espanol

English



This initiative was made possible through a partnership between Gateway Cities Council of Governments and Southern California Regional Energy Network (SoCalREN) Public Agency Program. SoCalREN is administered by the County of Los Angeles and funded by California utility ratepayers under the auspices of the California Public Utilities Commission.

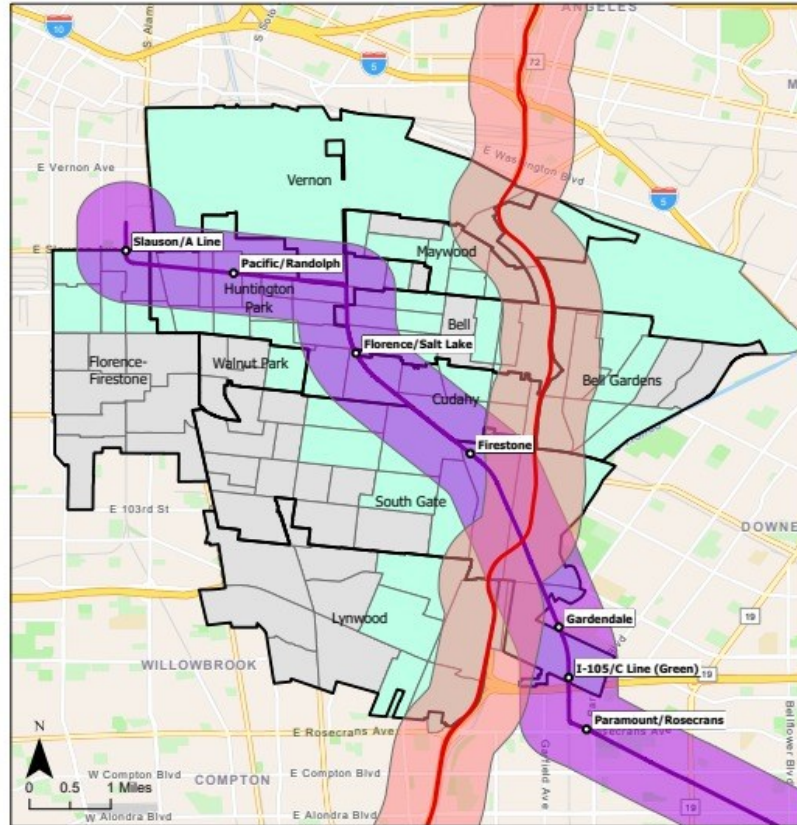




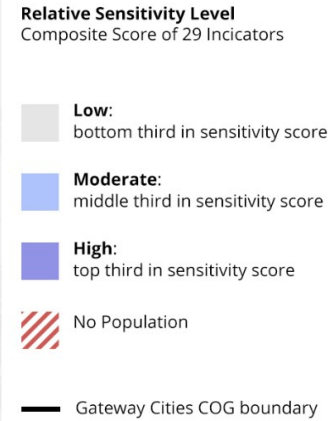
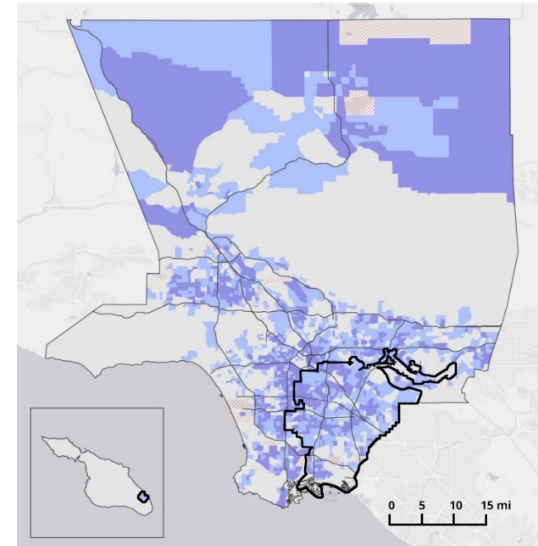
# GCRCC Partners



## Gateway Cities RCC Communities of Focus



Sources: County of Los Angeles, California State Parks, Esri, HERE, Garmin, SafeGraph, GeoTechnologies, Inc, METI/NASA, USGS, Bureau of Land Management, EPA, NPS, USDA, LA Metro, US Census Bureau

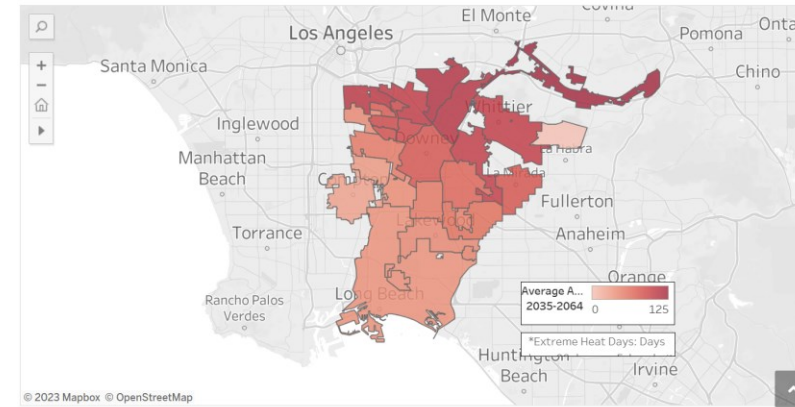


Source: LA County CVA

## Gateway Cities Council of Governments

### Average Annual Number of Projected Extreme Heat\* Days 2035-2064

Source: California Healthy Places Index



© 2023 Mapbox © OpenStreetMap





## Question 3

Considering options such as co-investments, technical advisory services, advocacy opportunities, and more, what does collaboration look like between critical service providers and local government?



## Question 4

Considering options such as enhanced community partnerships, prioritizing and tracking equity considerations, and other forms of collaboration, what should be done to prevent frontline communities from bearing the brunt of climate change impacts?