

Resilience Hubs

Designing Community-Led Resilience with Clean Energy

California Adaptation Forum 2023

COMMUNITIES
FOR A BETTER
ENVIRONMENT
established 1978





Laura Gracia-Santiago
Climate Adaptation and
Resilience Enhancement
(CARE) Coordinator
Communities for a Better
Environment (CBE)



Patrick Murphy
Senior Scientist
PSE Healthy Energy



Katherine Lee
Richmond Youth Organizer
Asian Pacific Environmental Network



Elena Krieger
Director of Research
PSE Healthy Energy



RESILIENCE HUBS:

Designing
Community-led
Resilience with
Clean Energy

Track:

Actionable Science



August 2nd
8:15 - 9:45am



Sheraton Fairplex

Introductory Poll: slido.com with #7639183



What region are you working in?



Would your resilience hub serve urban, suburban, or rural communities?



Where are you in your resilience hub thinking?

<https://app.sli.do/event/hi1csjhQ6wz6fA2xr6nJqK>

“Climate change starts in our hoods, climate change ends in our hoods”



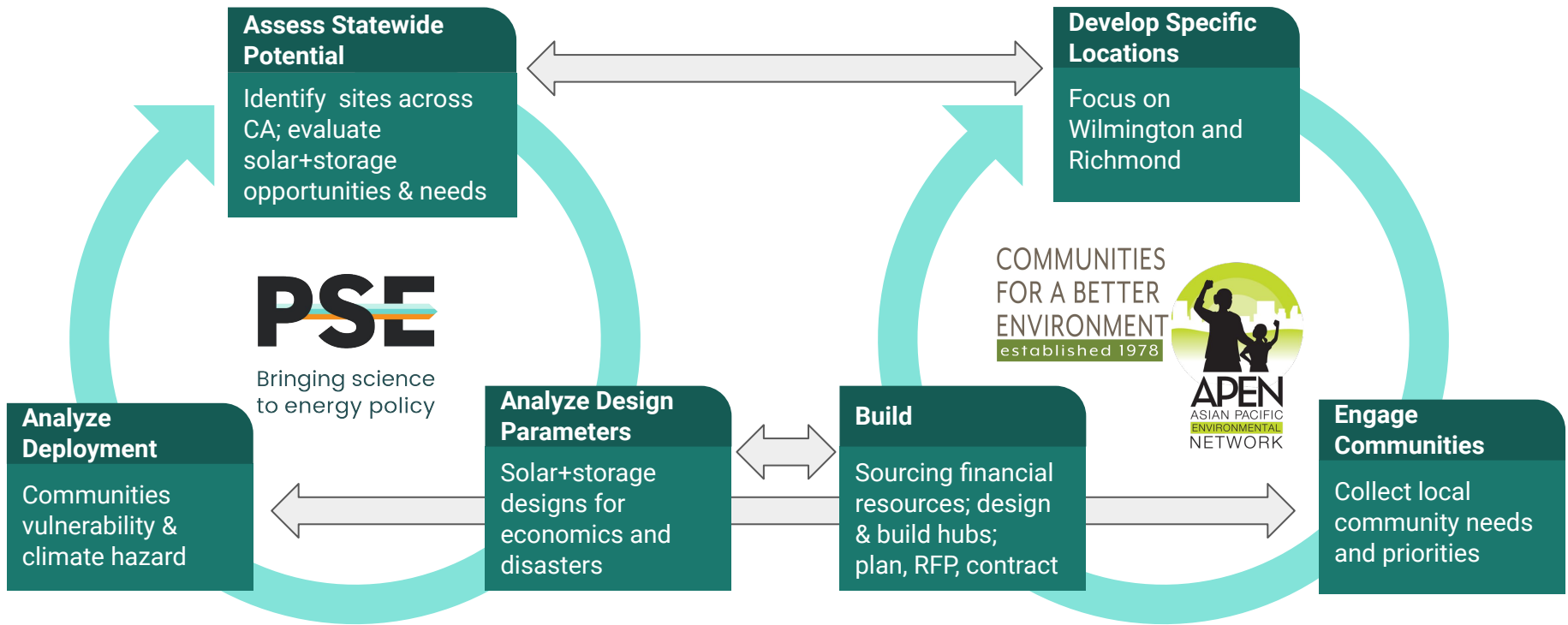
Goals:

- Ground climate adaptation and resilience efforts in environmental justice principles
- Build scalable skills across communities via storytelling
- Learn to use the Candidate Resilience Hub Mapping Tool

Background

- Low- income communities are more likely to experience the highest increase in childhood asthma diagnoses, highest increase in heat related deaths, loss of labor due to extreme heat, and traffic delays due to high-tide flooding

Project Overview



Interactive visuals/maps:

- Sites
- Vulnerabilities
- Power outages
- ...

Academic papers:

- Design
- Vulnerabilities
- Optimization
- ...

Reports:

- Exec sum
- Technical report
- Case studies
- ...

Engagement:

- Blogs
- Presentations
- Briefings
- Data/code
- ...

Community toolkits:

- Recommendations/lessons learned
- Surveys

What is a resilience hub?

Resilience hubs are places in the community that people know and trust like senior centers, schools and libraries where you can:

- Refrigerate food and medicine
- Charge devices to stay in communication with loved ones
- Stay cool and breathe clean air

Resilience hubs have people and resources that help make our communities stronger before, during, and after disasters.



APEN is calling on our lawmakers to invest in creating resilience hubs across California. Got ideas for a resilience hub in your neighborhood? Get involved:

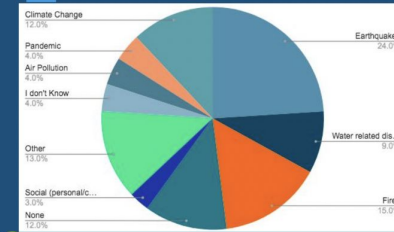
APEN4EJ.ORG/HUB



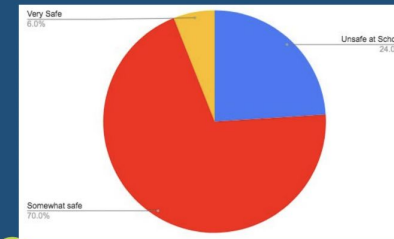
Just Transition is a vision-led, unifying and place-based set of principles, processes and practices that build economic and political power to shift from an extractive economy to a regenerative economy.

Source: Climate Justice Alliance

What type of disasters are you most concerned about?

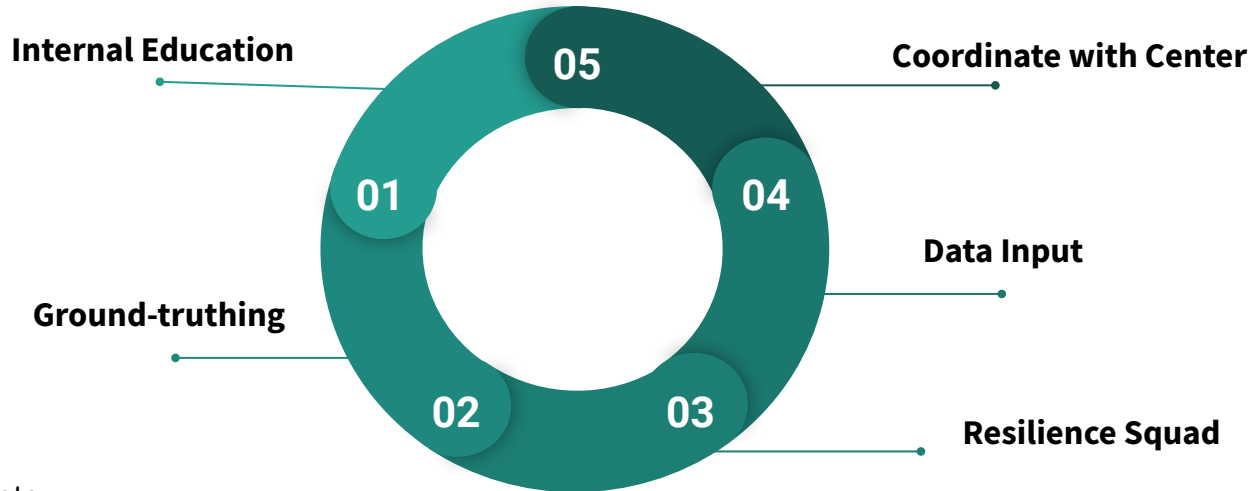


In the case of a climate disaster, how safe would you feel at school?



<- linktree for full powerpoints and 1-pagers

CBE Wilmington

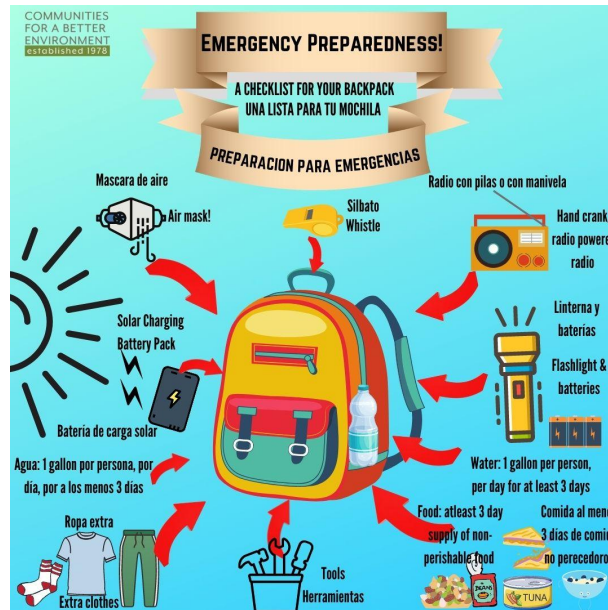
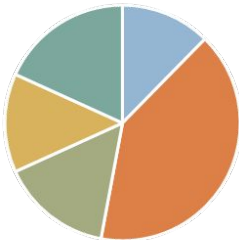


Demographics:

- 77% had dependents
 - Avg: 4 people, Min: 2, Max:7
- Proximity to industry
 - 19% adjacent
 - 44% < 1 mile
 - 36% ~ 5 miles
- 22% Immunocompromised
- During power outage- Avg: 73 min
 - Min: immediately, Max: 3 hours

Where to go during emergency

- Yes-Trust
- Family
- Public Services
- Community
- No

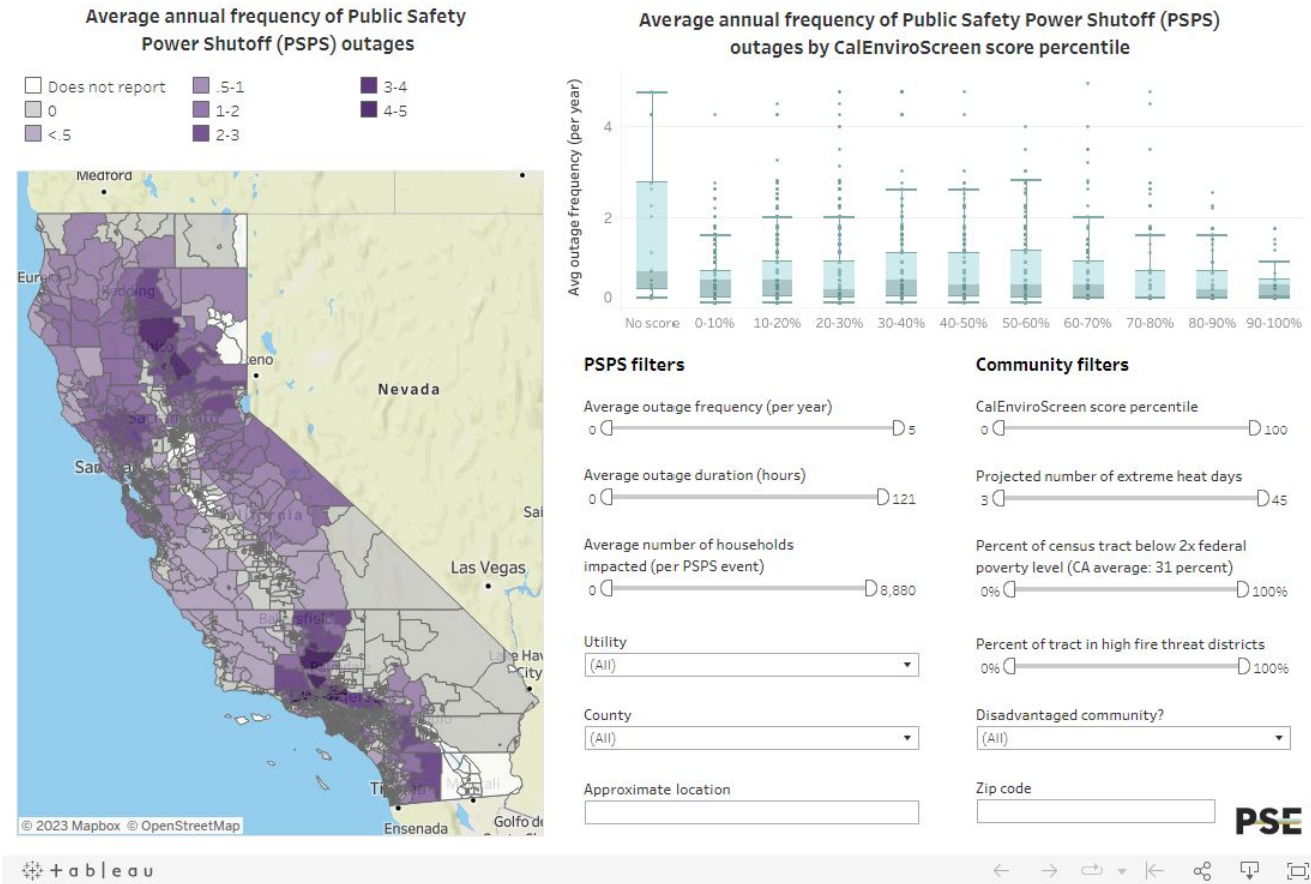


The following resources were requested by frontline residents to combat the worsening climate crisis:

Is there anything missing that you would like to see?

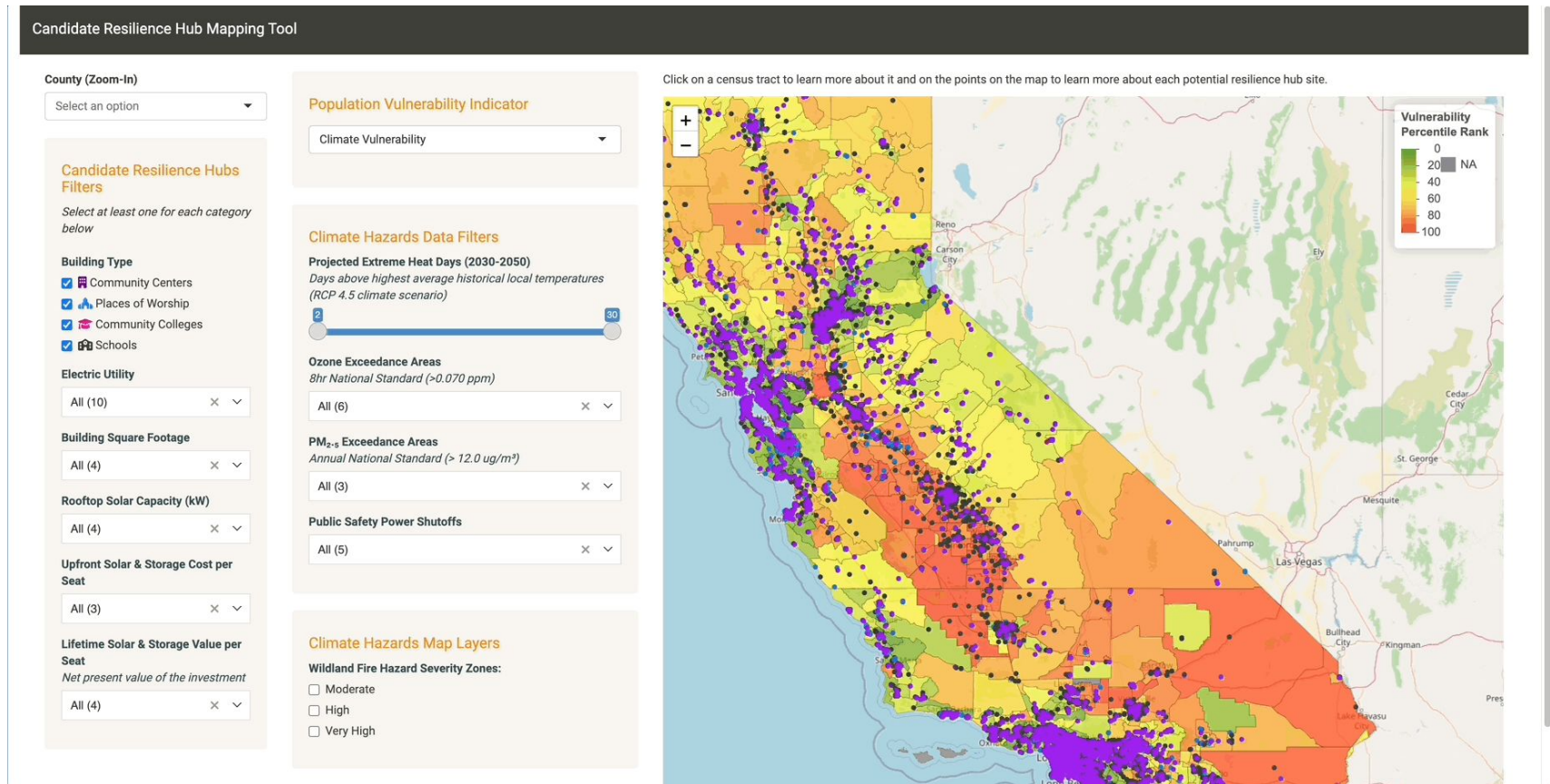
- Counseling, Legal/Financial Resources & Support
- Food, Water & Refrigeration
- Emergency/First Aid Kits, Fire Prevention & Earthquake Response Materials
- Phone Charging
- Tutoring, Health & Youth Support Services
- Hub Within Walking Distance, Complimentary Transportation & EV Charging Stations
- Cultural, Art & Organizing Activities

Public Safety Power Shut Off Interactive Map



Visit: <https://www.psehealthyenergy.org/our-work/interactive-tools/california-public-safety-power-shutoff-interactive-map/>

Candidate Resilience Hubs Mapping Tool



Visit: <https://www.psehealthyenergy.org/our-work/interactive-tools/exploring-potential-resilience-hubs-in-california/>

Reconvening Questions

- What did you learn?
- What was unexpected?
- What were challenges or barriers that arose?
- What priorities did your group agree or differ on?
- What is the most difficult challenge you face in your community developing resilience hubs?
- What is the next step for you and your community?

Moving Forward

- CBE releasing a Story Map Resilience Toolkit on August 4
- APEN is releasing a Resilience Hub Toolkit in the coming months
- We will be holding a webinar on August 7, 11am PT. Please share with friends and colleagues!
- Please reach out to us if you have questions or want support as you are navigating the hub development process!
- PSE will be releasing a report on resilience hub, climate, and policy challenges and opportunities this fall
- If you see missing sites or have feedback on the tool, please send us a message!

Please reach out!

Elena Krieger, PhD

Krieger@psehealthyenergy.org

Patrick Murphy, PhD

patrick@psehealthyenergy.org

Kat Lee

katherine@apen4ej.org

Laura Gracia

laura@cbeval.org

COMMUNITIES
FOR A BETTER
ENVIRONMENT
established 1978

PSE

Bringing science
to energy policy




www.cbeval.org

www.psehealthyenergy.org

apen4ej.org

 [Facebook.com/PSEHealthyEnergy](https://www.facebook.com/PSEHealthyEnergy)

 [@PhySciEng](https://twitter.com/PhySciEng)