



# HEAT

## RELIEF4LA

CLIMATE EMERGENCY  
MOBILIZATION OFFICE





# CLIMATE EMERGENCY MOBILIZATION OFFICE



## 4 Main Strategies:

1) **Community Engagement through our #HeatRelief4LA Network** and Climate Equity LA series, to build awareness and planning into the social fabric of LA, with a focus on social vulnerabilities and inequities embedded in LA's most pollution burdened areas.

2) **Heat Resilient Infrastructure Modernization** all with a focus on equitable investments and **Cooling Center Network**, adding Cool spots and sharing the information in real time with Cool Spots LA app, so people can go to any library to cool off and some of the hours will be ended very soon. Call 311 and it will be available on our Cooling Center Map with City and County.

3) **Climate Adaptation for homes and buildings with a building code and performance benchmarks** that prevent displacement and cater to tenant stabilization and incentivize landlords ; and

4) **Unified approach to Extreme Heatwave Preparedness and Integrated Planning** with multiple departments and agencies

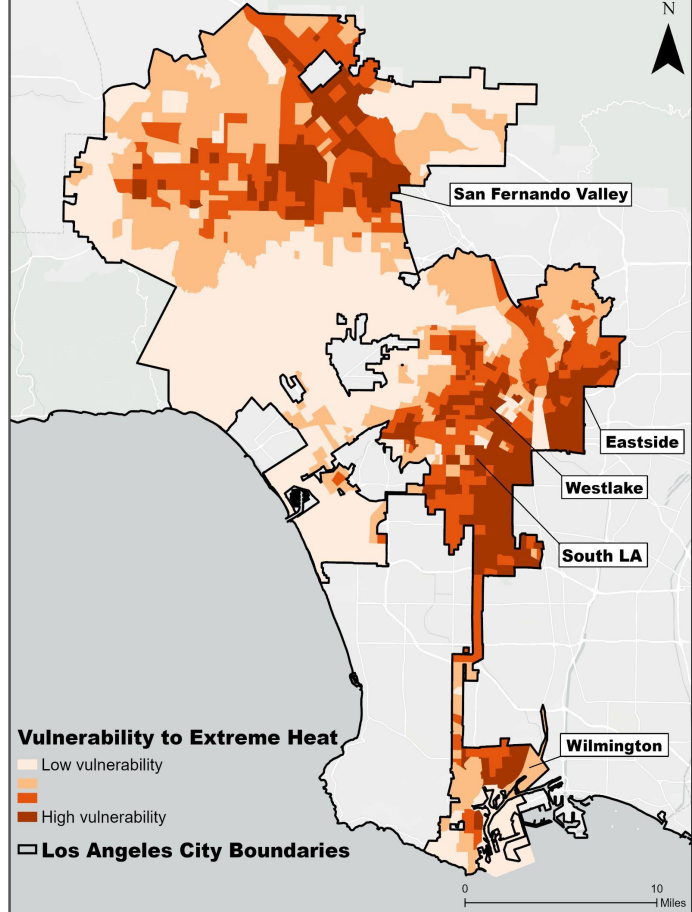


# Extreme Heat is LA's # 1 Climate Hazard & Public Health Risk

- Los Angeles: There is a **5 Fold** increase in heat wave frequency compared to 10 years ago.
- LA is expecting a **31%** increase in extreme heat days by 2050

## 1,177 Excess ER Visits

Nearly 1200 daily excess ER visits on extreme heat days due to heat-related illnesses between 2009 and 2018 in these hot zones. [UCLA Heat Map](#)



UCLA HEAT RISK MAP, SCHOOL OF PUBLIC HEALTH



CLIMATE EMERGENCY  
MOBILIZATION OFFICE

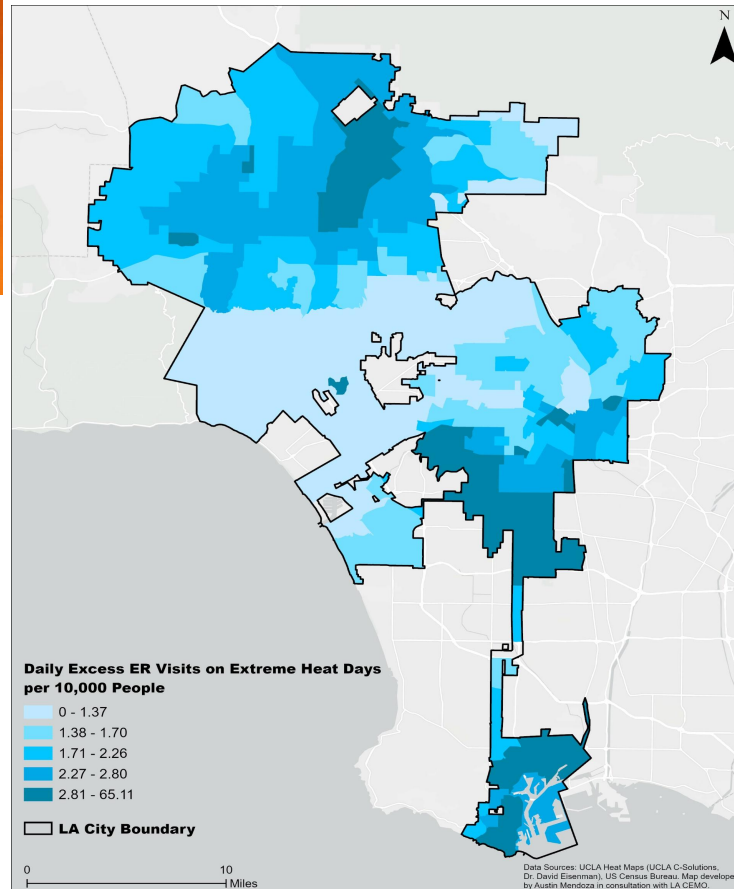


# HEATWAVES ARE A CLIMATE JUSTICE ISSUE

The *highest rate of excess ER visits in the Darkening blue areas.*

Census tracts in the San Fernando Valley, South Los Angeles, Boyle Heights, and the Harbor Area are experience

LA has the largest Urban Oil Field in the Nation, and the pollution there is stagnated by heat and combined with chronic illness, and this increases death and ER Visits. [UCLA Heat Map](#), School of Public Health

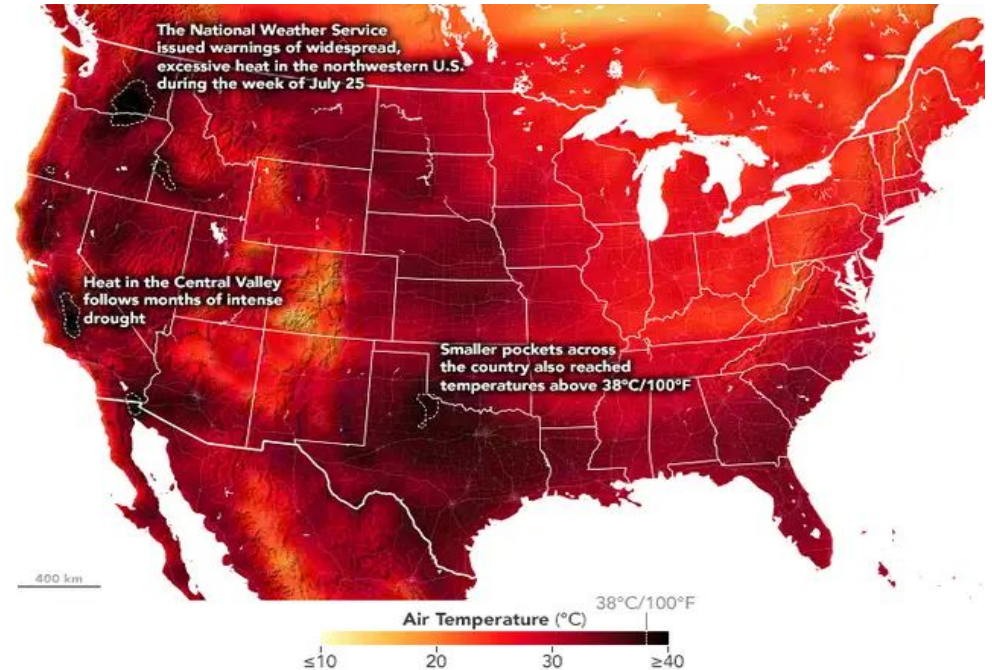


**EXCESS ER Visit Rates on Extreme Heat Days: Tracts**



# Nationwide Formerly Redlined Areas

- 7.5°F hotter in the day
- 3.6°F hotter at night
- 74% less parkland
- 30% less tree canopy
- 50% of those that die during heat waves are homeless

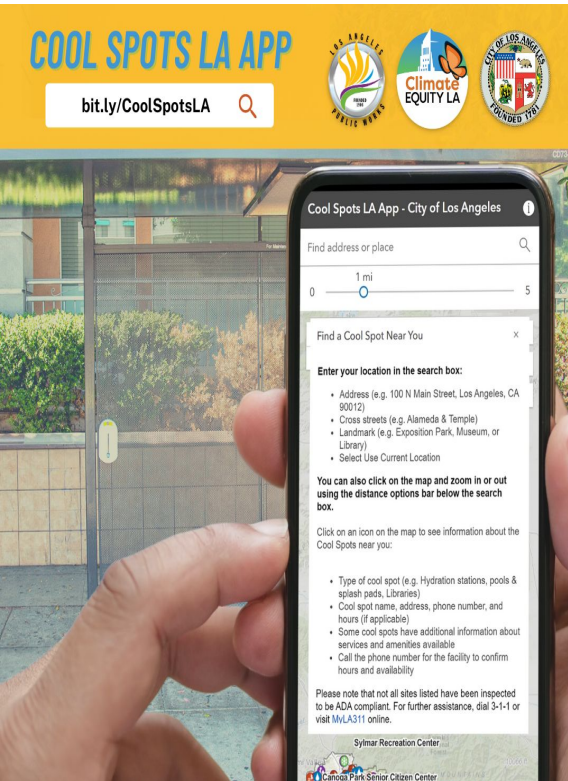


CLIMATE EMERGENCY  
MOBILIZATION OFFICE



# LA's New Chief Heat Officer Expands Cooling Centers Based on Equity Maps

By Patricia Cummins



**Heat Action Plan will Prioritize Nature Based Solutions (Co-Design and Co-Benefits)**

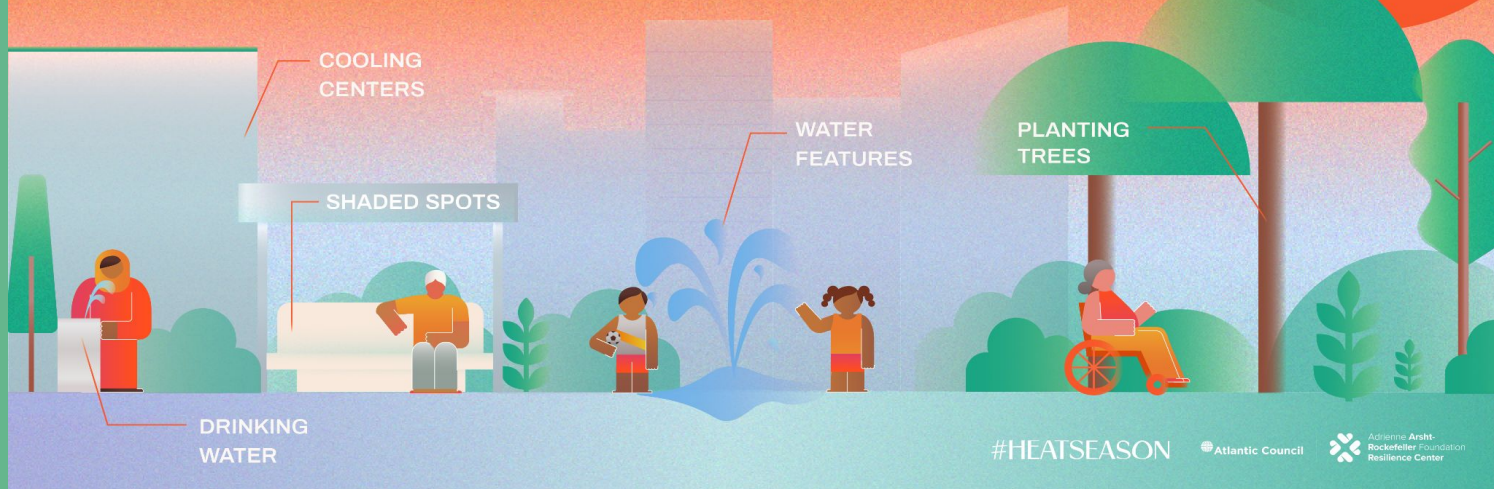




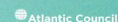
# CLIMATE EMERGENCY MOBILIZATION OFFICE

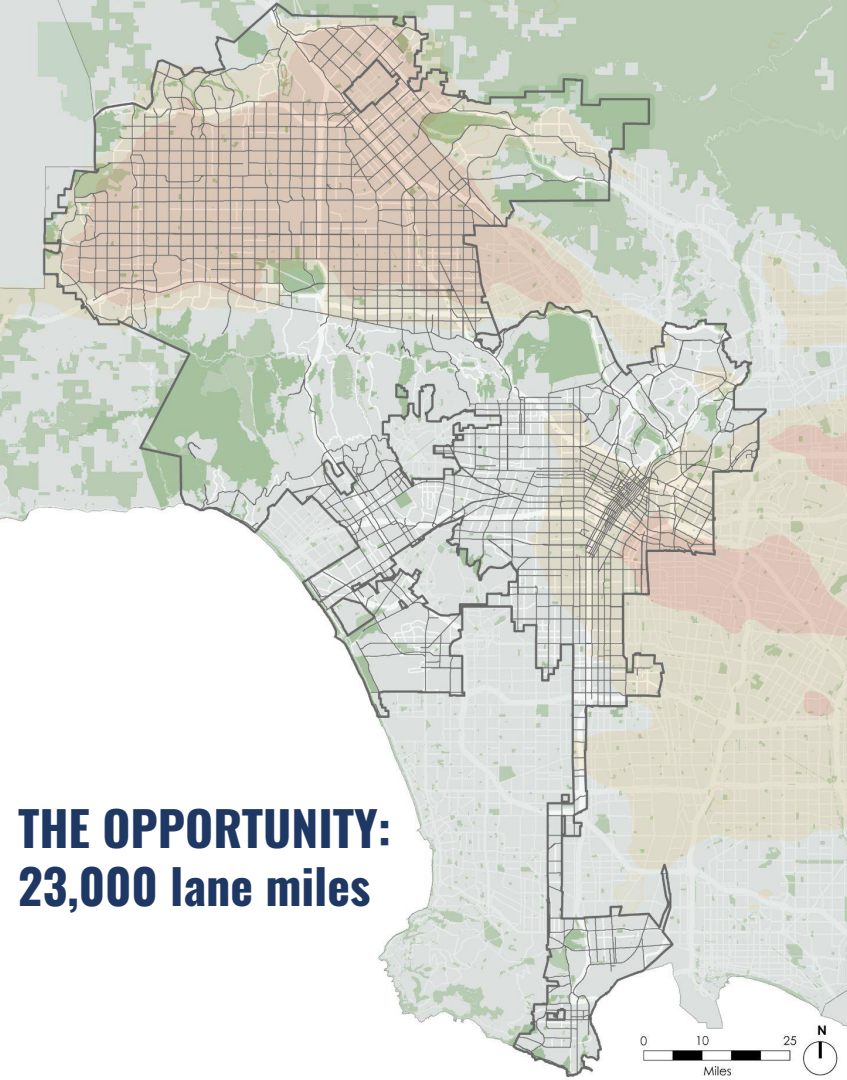


## WHAT DOES IT LOOK LIKE WHEN CITIES CREATE SPACES FOR RESIDENTS TO STAY COOL AND SAFE?

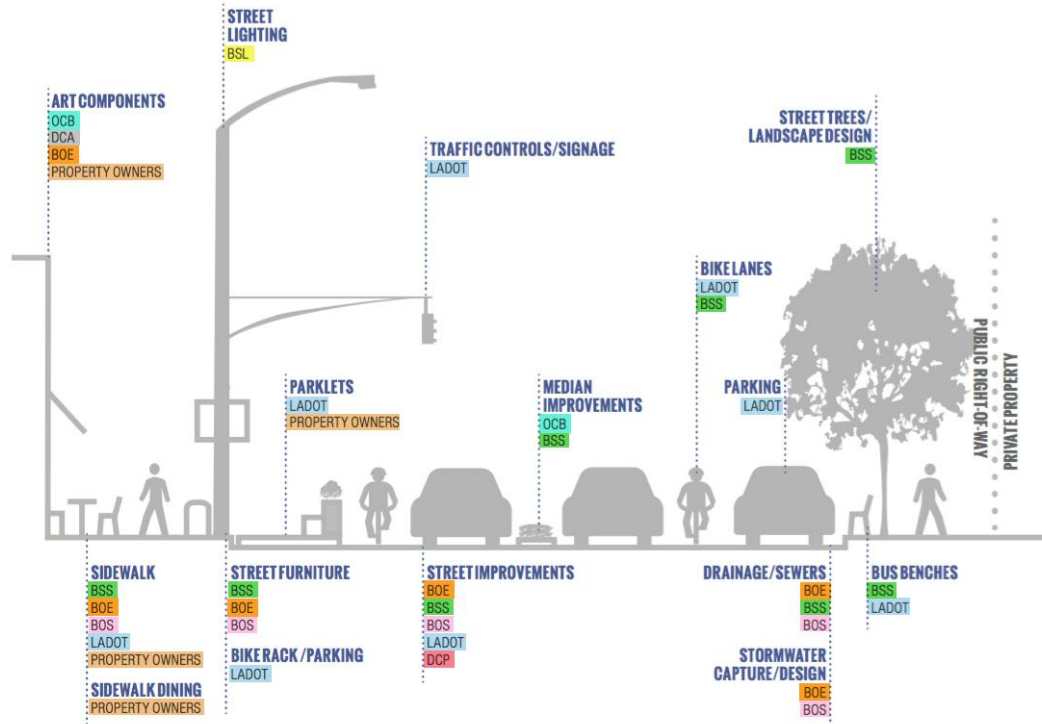


#HEATSEASON





**THE OPPORTUNITY:  
23,000 lane miles**



**THE CHALLENGE:  
Complex Street Infrastructure System**



# L.A.'s GREEN NEW DEAL

Sustainable City pLAn  
2019

Environment  
Economy  
Equity

## CITY OF LOS ANGELES INTERDEPARTMENTAL MEMORANDUM OF UNDERSTANDING:

Improving Project Planning and Delivery in the Public  
Right-of-Way



## THE PROPOSAL: One Infrastructure

### BUILDING A CLIMATE-RESILIENT ACTIVE TRANSPORTATION NETWORK IN VULNERABLE COMMUNITIES

Caltrans FY21-22 Sustainable Communities Planning Grant Program

### Resilient Street Improvement Planning Assessment (RSPA)

- Criteria Database
- Decision Support Matrix

### One Infrastructure Plan

- a framework for identifying the most urgent corridors where grey, blue, and green infrastructure priorities align and serve LA's most vulnerable communities

### Model Corridor

- a grant-ready and grant-competitive 'One Infrastructure' vision, supported through stakeholder engagement

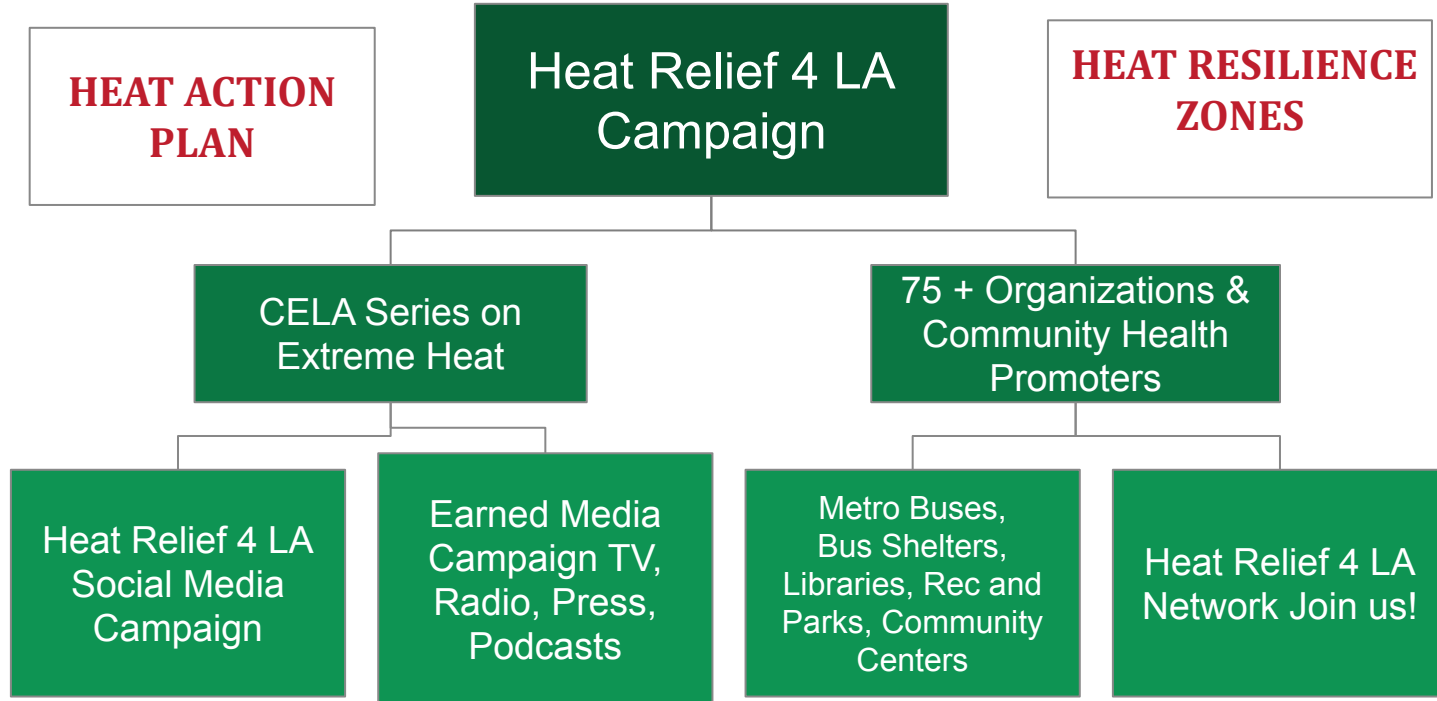
# Heat Relief 4 LA



CLIMATE EMERGENCY  
MOBILIZATION OFFICE



# 2023 Heat Relief 4 LA Campaign



CLIMATE EMERGENCY  
MOBILIZATION OFFICE



# CEMO Partners with Environmental Justice and Frontline Communities

CEMO incorporates frontline community needs, perspectives, and preferences into equitable heat adaptation policy for Los Angeles

Collaborate with frontline communities

Incorporates best practices from existing policy and research

Addresses heat health inequities

Centers to community preferences and agency in policymaking

Evaluates effectiveness of current outreach strategies



CLIMATE EMERGENCY  
MOBILIZATION OFFICE



# Join the Heat Relief 4 LA Network:

[Climate4LA.org/HeatRelief4LAPartners](https://Climate4LA.org/HeatRelief4LAPartners)

- Go to the link to join our 20 week social media campaign to share tips on staying cool during the summer
- CEMO can tailor graphics/content specifically for libraries! This is an example from the 2022 Campaign.



CLIMATE EMERGENCY  
MOBILIZATION OFFICE



# CALL TO ACTION/RESOURCES

- Join the Heat Relief 4 LA Network: [Climate4LA.org/HeatRelief4LAPartners](https://Climate4LA.org/HeatRelief4LAPartners)
- Use CEMO Heat Resources: [Climate4LA.org/heat](https://Climate4LA.org/heat)
- Call 311 or use [My311.org](https://My311.org) to identify more Heat Safety Tips and resources
- Print & Share CEMO Heat Relief Resource Poster: [Climate4LA.org/HeatReliefPoster](https://Climate4LA.org/HeatReliefPoster)
- Share Our Cool Spots LA App: [Climate4LA.org/CoolSpotsLA](https://Climate4LA.org/CoolSpotsLA)
- Access City Services: <https://myla311.lacity.org/>
- FOR WORKERS: Cal/OSHA: [dir.ca.gov/dosh](https://dir.ca.gov/dosh)
- FOR WORKERS IN SPANISH & OTHER LANGUAGES: [99calor.org](https://99calor.org)
- CDC Extreme Heat resources: [cdc.gov/disasters/extremeheat](https://cdc.gov/disasters/extremeheat)
- Sign up for our newsletter & SHARE : [Climate4LA.org/newsletter](https://Climate4LA.org/newsletter)



CLIMATE EMERGENCY  
MOBILIZATION OFFICE



# Extreme Heat Resources // Recursos para el calor extremo

PREPARE AND PROTECT YOURSELF FOR  
**HEAT SEASON**

Heatwaves are longer, more frequent, and more dangerous to your health!

**Who is Most at Risk?**

- Outdoor workers
- People who are active outdoors
- Infants and children, pregnant women, elders
- People with chronic illness, such as asthma, heart disease, and diabetes
- Pollution-burdened areas experience excess hospitalizations and deaths (UCLA Heat Maps)

**Heat Check! What can you do to prepare?**

**STAY COOL AND HYDRATED**

- If you feel too hot, go somewhere cool and rest, like a cooling center.
- Wear light-colored, lightweight clothing that breathes.
- Take cool showers.
- Avoid direct sunlight and limit caffeine.
- Drink more water and carry a reusable water bottle.

**LISTEN TO YOUR BODY**

- **Learn the warning signs of heat illness:** heavy sweating, clammy skin, cramps, tiredness, dizziness, headaches, nausea, confusion, high body temperature.
- If you experience these symptoms and suspect heat stroke, **call 911 and seek medical attention immediately.**

**STAY INFORMED**

- Check local news and weather reports.
- Prepare, plan, and practice heat safety.
- Create a buddy system.
- Check on the elderly and anyone at risk.
- Sign up for EMD's NotifyLA: [NotifyLA.org](https://www.notifyla.org)
- Check the Cool Spots LA App or call 311 for cooling resources: [bit.ly/CoolSpotsLA](https://bit.ly/CoolSpotsLA)
- Visit our website: [Climate4LA.org/heat](https://Climate4LA.org/heat)

CLIMATE EMERGENCY MOBILIZATION OFFICE  
CHIEF HEAT OFFICER



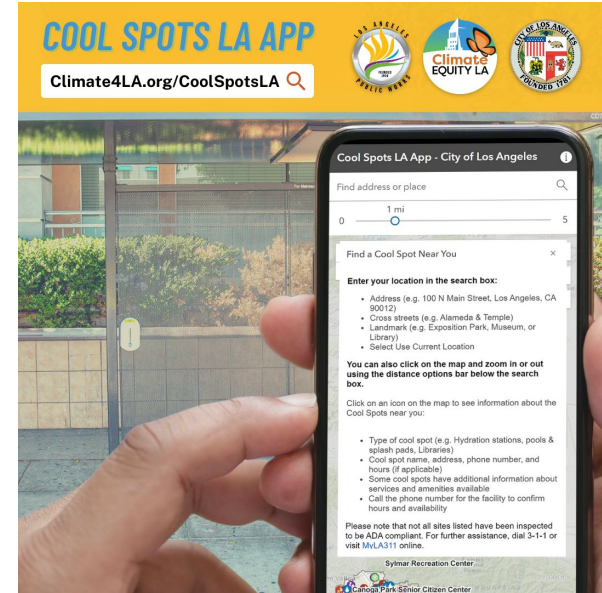
SCAN HERE FOR MORE INFORMATION



[Climate4LA.org/heat](https://Climate4LA.org/heat)

← Heat Relief Resource Poster  
[Climate4LA.org/HeatReliefPoster](https://Climate4LA.org/HeatReliefPoster)

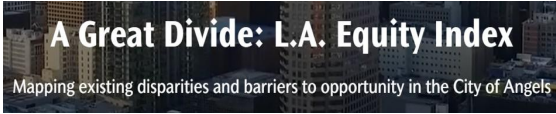
Cool Spots LA App →  
[Climate4LA.org/CoolSpotsLA](https://Climate4LA.org/CoolSpotsLA)



CLIMATE EMERGENCY  
MOBILIZATION OFFICE



# HOW DO WE EQUITABLY INTEGRATE NATURE BASED SOLUTIONS?



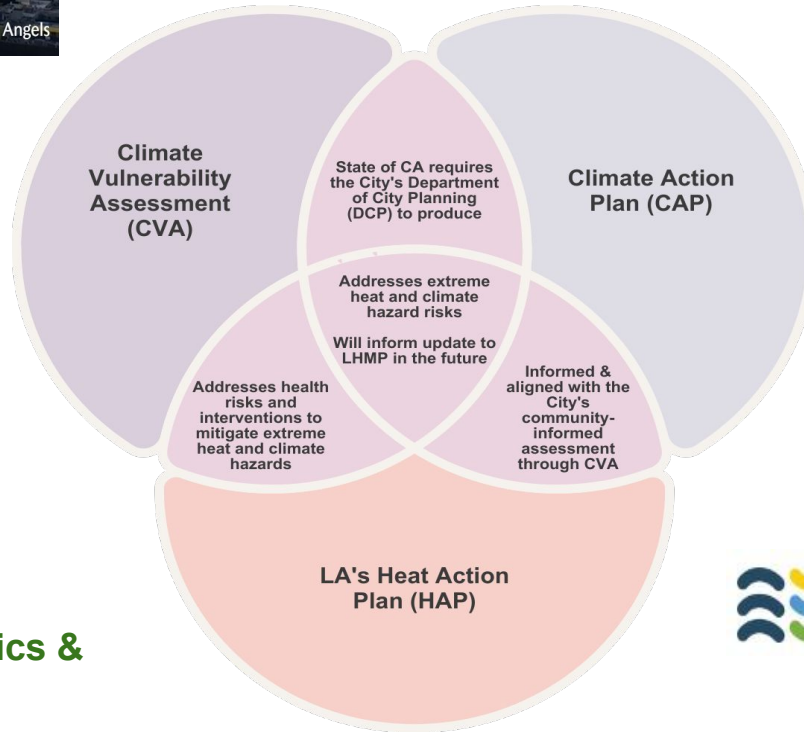
## JUSTICE40

A WHOLE-OF-GOVERNMENT INITIATIVE

 ENVIRONMENTAL JUSTICE

## Shade Equity

### Infrastructure Metrics & Planning



## CalEnviroScreen 4.0

## Green Space Metrics

## Health Disparities



Climate and Economic Justice  
Screening Tool

## CLIMATE EQUITY METRICS AND INTEGRATED CITY PLANNING





# Thank you!

**MARTA A. SEGURA, M.P.H.**

Chief Heat Officer and CEMO Director

Executive Director, Climate Emergency Mobilization Commission (CEMC)

**CLIMATE EMERGENCY MOBILIZATION OFFICE (CEMO)**

Board of Public Works • City of Los Angeles

[climate4la.org](https://climate4la.org)

200 N Spring Street, Room 967

Los Angeles, CA 90012

[CEMO-Office@lacity.org](mailto:CEMO-Office@lacity.org)



CLIMATE EMERGENCY  
MOBILIZATION OFFICE

