



Anuj Desai
Senior Advisor
Southern California Edison



Rev. Frank Jackson Jr.
Chairman and CEO
Village Solutions Foundation



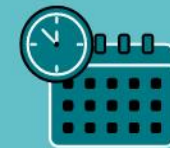
Tracy Stanhoff
President; Former Tribal Chair,
Prarie Band Potawatomi Nation
President, AD PRO
President, American Indian
Chamber of Commerce of CA



Gilmar Flores
Director of Programs and Research
Breathe Southern California

Community Voices
from Multisector
Adaptation
Planning

Track:
People Power



August 2nd
1:00 - 2:00pm

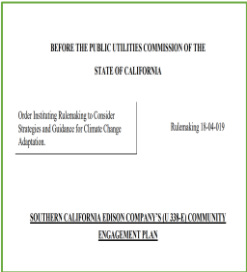


Sheraton Fairplex

DVC* Engagement Connects to our Climate Assessment, our Corporate Climate Leadership, and our Asset Management Planning Process



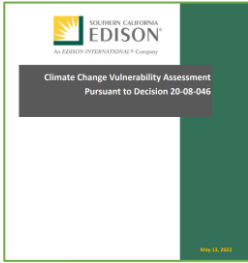
Outreach to community leaders on adaptive capacity and adaptation engagement, to inform SCE’s Community Engagement Plan filed in May 2021



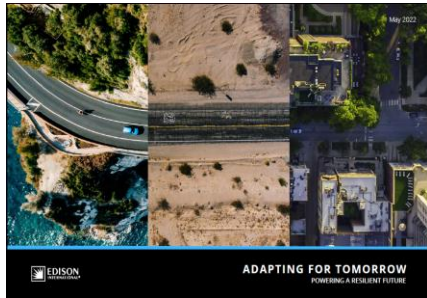
Climate Resilience Leadership Group (CRLG) developed engagement plans and materials, and administered ~800 surveys across over ~80 CPUC***-designated DVCs to inform CAVA.



CAVA [released](#) by SCE as a first-of-its kind utility look into 2030-2070 grid impacts across 50,000-square-mile service area



Thought-leadership paper on need to prioritize climate resilience planning, investments, and partnerships [published](#) by Edison International



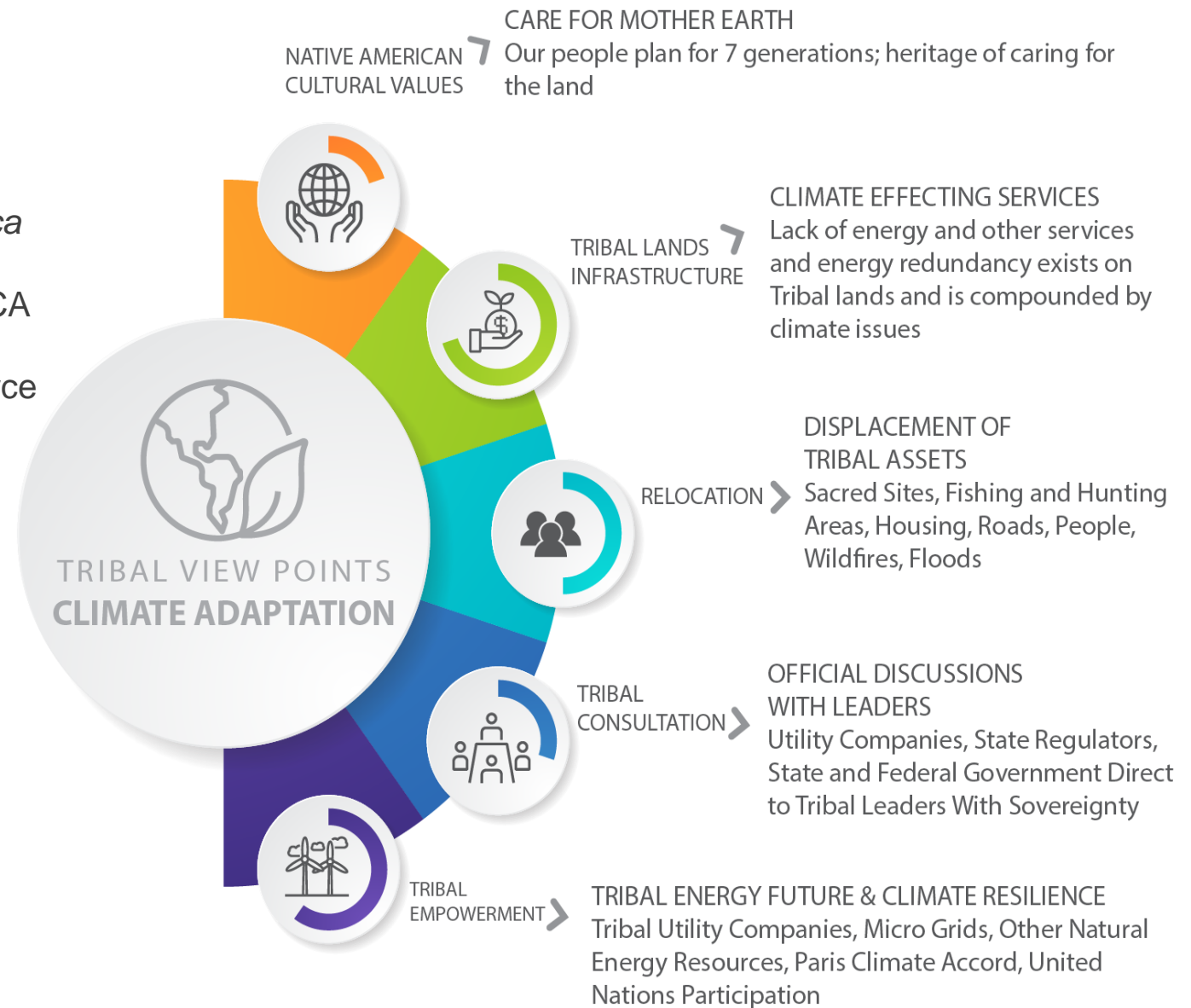
SCE embarks on asset planning for its next GRC using climate metrics developed for the CAVA that focus on community resilience and community impact.

SCE’s May 2023 GRC**** filing proposes ~\$100m in investments informed by these metrics, which were informed or validated by the results of our DVC community engagement surveys.

* DVC=Disadvantaged Vulnerable Community ** CAVA=Climate Adaptation Vulnerability Assessment *** CPUC=California Public Utilities Commission ****GRC=General Rate Case

Tracy Stanhoff, American Indian Chamber of Commerce of California

- ▶ President & Creative Director, AD PRO
- ▶ Publisher, *Indigenous Post – News From Native America*
- ▶ President, American Indian Chamber of Commerce of CA
- ▶ Leader, American Indian National Chamber of Commerce
- ▶ Former Tribal Chair, Prairie Band Potawatomi Nation
- ▶ Serve on many boards, committees including State of California, California Energy Commission Advisory Committee for the Clean Transportation Program Investment Plan



Gilmar Flores, Breathe Southern California



120 years of serving the communities of Southern California.

Mission: Promote clean air and healthy lungs through research, education, advocacy, and technology.

Provide programs that are fun and interactive experiences designed to empower individuals to take charge of their health, home, and surroundings. We meet individuals where they are instead of telling individuals what they should do. We demonstrate small steps that they can take to make a change.

Programs:

- Non-Toxic Cleaning Workshop
- Induction Stove Workshop
- Wild Fire Education
- BlueSky LA



Reverend Frank Jackson, Village Solutions Foundation

COMMUNITY INITIATIVE STRATEGIST

Rev. Frank Jackson, Jr.
Chairman and Chief Executive Officer

Village Solutions Foundation
A Faith-Based Community Development Corporation
Building a Better Community Pathway 2045 Initiative

Community Initiatives Affiliate
University of Southern California
Center for Religion and Civic Culture
Cecil Murray Center for Community Engagement

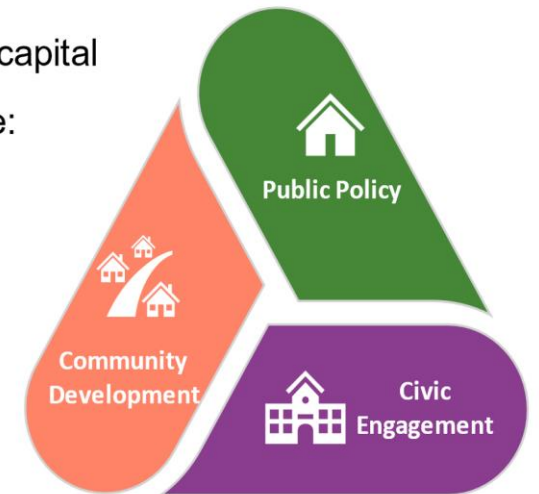
Southern California Edison Clean Energy Working Group
Community Advisory Committee

Completed: Stanford University School of Engineering
Center for Professional Development
Energy Innovation and Emerging Technologies Program

What Is the Triangle of Success?

We draw on the social, spiritual, and leadership capital of the Home, School, and Community to promote:

- Economic development
- Civic engagement
- Public policy
- Awareness, training, and resource networks



Email: revfjackson@cox.net
Cell: 949-683-7268