

A blue silhouette of a cityscape with various buildings, trees, and people riding bicycles, located at the top of the slide.

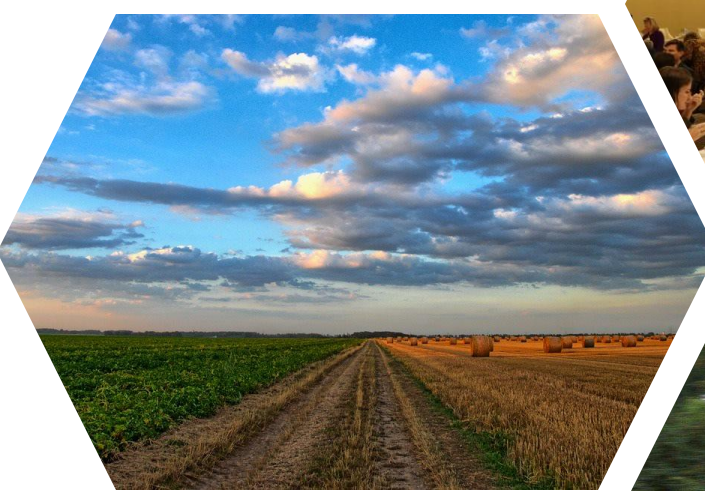
# SGC's Participatory Research to Policy Model



CALIFORNIA  
STRATEGIC  
GROWTH  
COUNCIL

A blue silhouette of a rural landscape with houses, trees, a tractor, and silos, located at the bottom of the slide.

**AB 109 directs CCR to support “research on reducing carbon emissions, including clean energy, adaptation, and resiliency, with an emphasis on California.”**



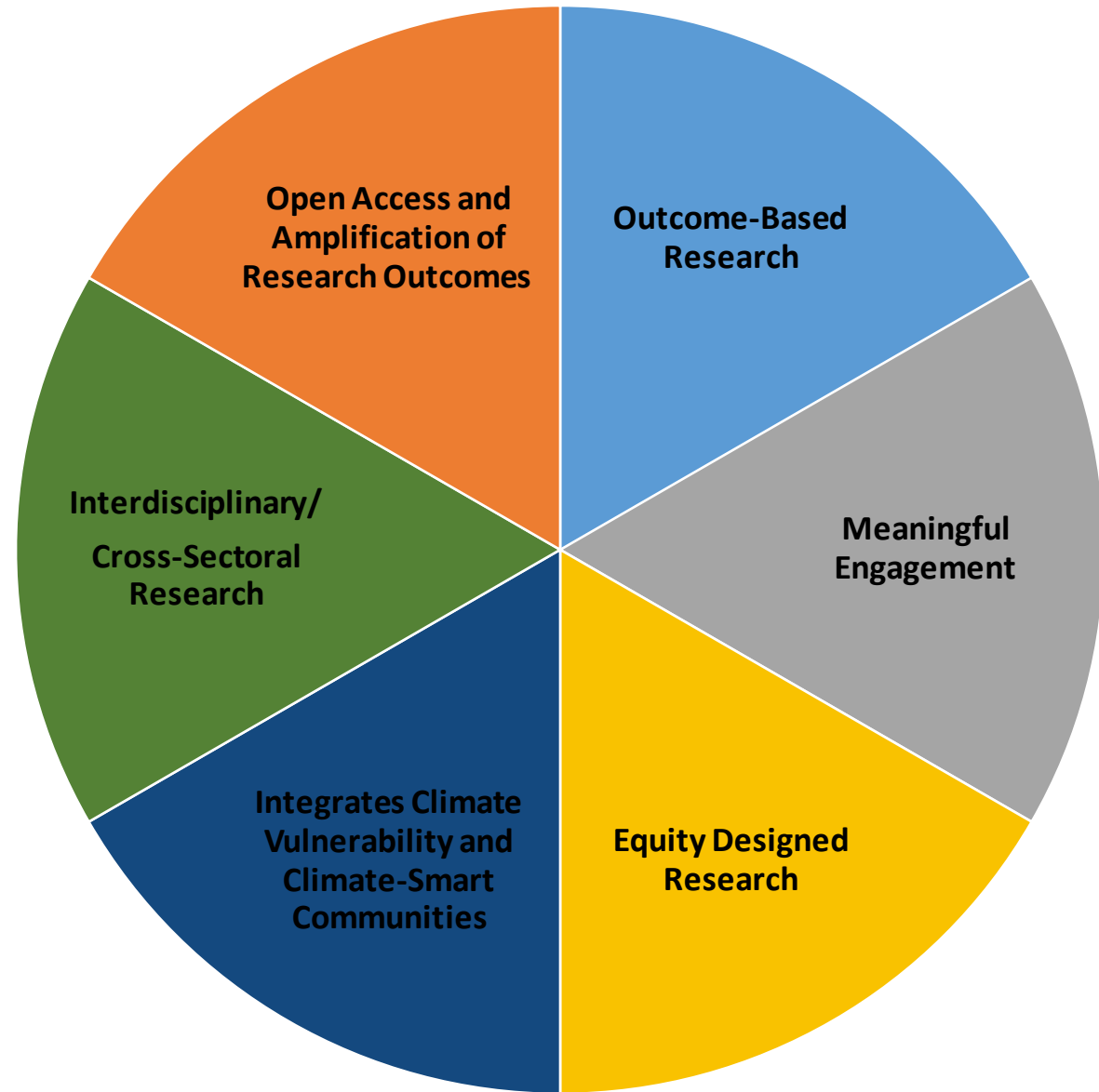
# Key Priorities

Research goals + SGC's mission:

- Overall: *ensure tangible research outcomes* that advance implementation of State's climate change, equity, and development goals.
- Aim to fill research gaps and leverage State's diverse research investments.
- AND, provide benefits and engagement with disadvantaged and vulnerable communities.

Leverage SGC's role as interagency body to coordinate and contribute to interagency research efforts, priority setting, etc.

**CCR's research model produces outcome-based research by facilitating scientist-community collaboration**



# CCR Program Snapshot

- 20 research projects funded with participation from 97 non-academic research partners including nearly 50 advocacy and EJ groups.
- 25 research institutions working on this research including all UC campuses, 6 CSUs, 5 not-for profit research institutions, 3 private universities, and 3 out of state universities.
- Seven projects provide climate tools to assist government and the public to understand and respond to the effects of climate change.
- Over 20 pilots have been employed in communities throughout the State to test research assumptions and evaluate successes.

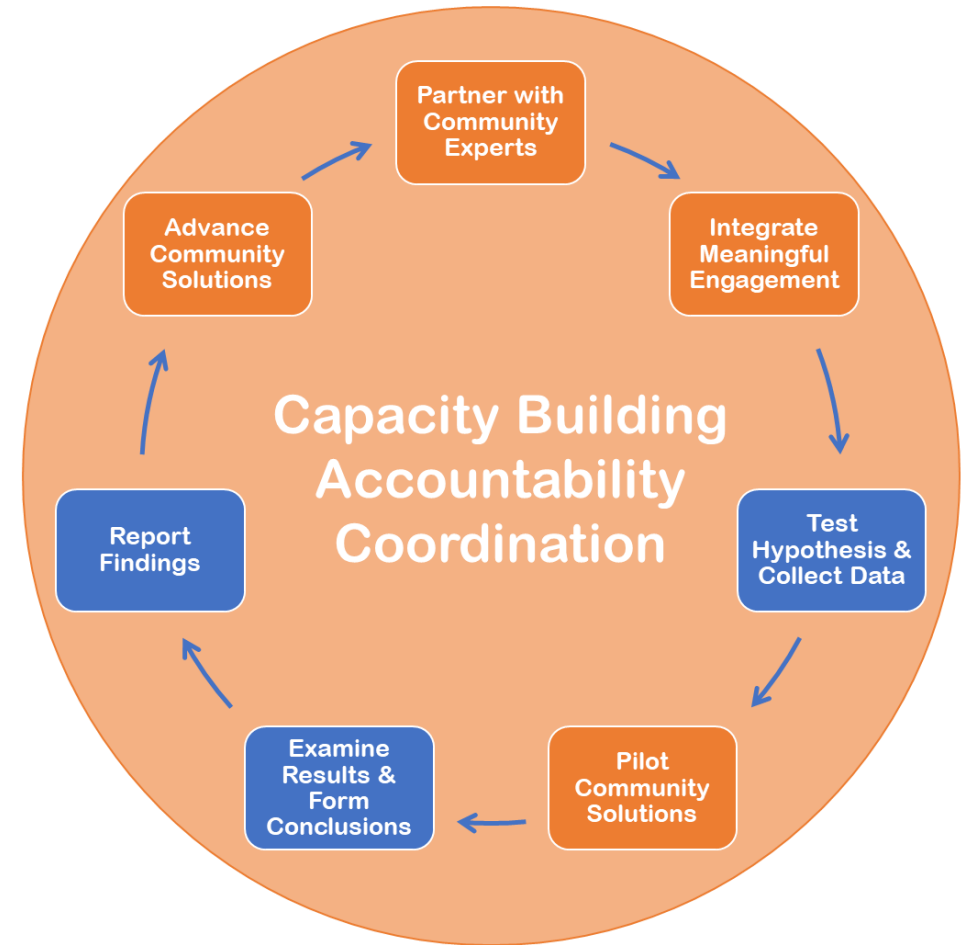
# What is Community-Based Participatory Research (CBPR)?

*A collaborative, partnership approach to research that equitably involves community members, organizational representatives, and researchers in all aspects of the research process. Partners contribute their expertise and share responsibilities and ownership to increase understanding of a given phenomenon and incorporate the knowledge gained with action to enhance the health and well-being of community members.*



# Participatory Research to Policy Model

SGC's model provides a framework for the **CBPR** by fostering **capacity building, accountability, and coordination** between community stakeholders and researchers



# Participatory Research to Policy Model



**Equitable partnership** between community experts and researchers is the foundation of the Participatory Research to Policy Model



# Participatory Research to Policy Model



- The most successful partnerships:
- Recognize the expertise and skills of all partners
- Involve all partners at every stage of the research process
- Ensure value reciprocity, evidenced by mutually defined goals
- Appropriately compensate all collaborators through formal partnerships
- Build capacity and provide technical assistance to community partners

# CCR Grantee Example: The Future of San Joaquin Valley agriculture under climate change and SGMA

## Partner with Community Experts

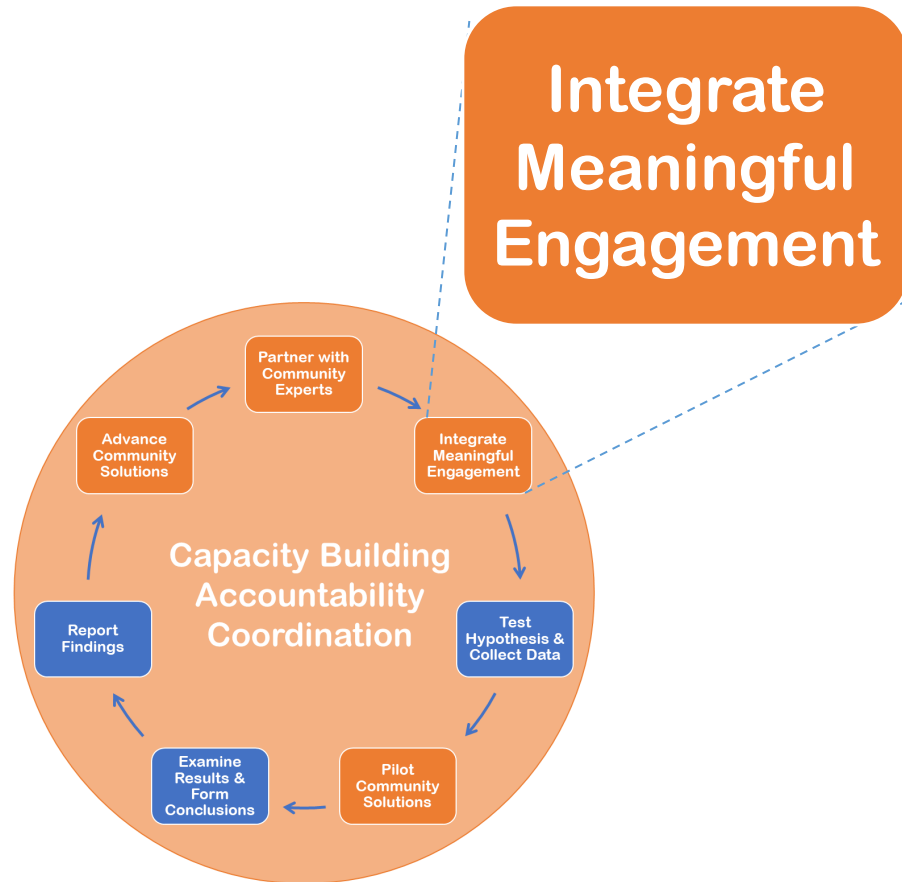
Partnered and centered expertise of California Cotton Ginners and Growers Association and Western Agricultural Processors Association:

- Identify and quantify the agricultural link between local communities and climate change
  - By conducting 18 interviews (9 in English/9 in Spanish) with community leaders and residents, local politicians, public servants, and specialists at NGOs and CBOs
- Find strategies that reduce SGMA's impact on SJV communities

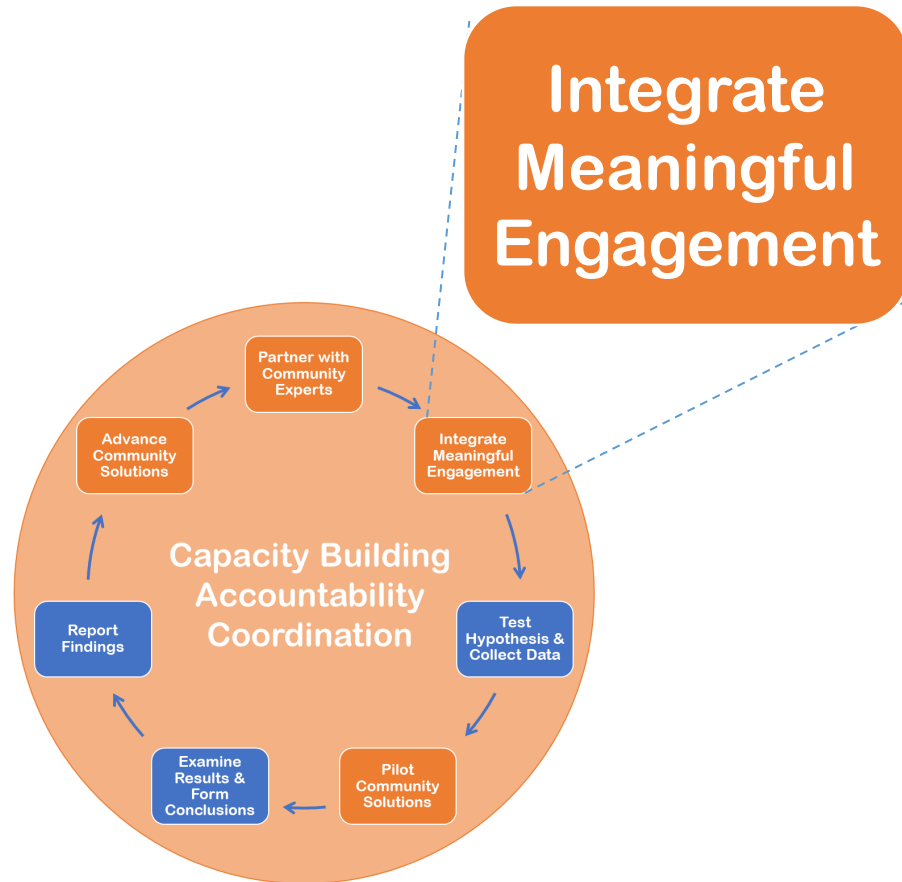


# Participatory Research to Policy Model

Meaningful and sustained stakeholder engagement leads to the development of **community-relevant** research questions and is at the center of equitable research practices



# Participatory Research to Policy Model



The most **successful engagement practices**:

- Communicates the value of the work to stakeholders
- Acts on community input rather than simply collecting it
- Engages with community stakeholders regularly
- Shares ownership of data and resources produced by or from the community

# CCR Grantee example: CAL-THRIVES: A California toolkit for heat resiliency in vulnerable environments

**Tips to Stay Cool in the Heat**  
Climate change is making heat waves longer and more frequent, particularly in the Central Valley of California. Heat-related illnesses, such as dehydration and heat stroke, pose a serious health risk to everyone.

**Cool to the Touch**

- ✓ **Cool your skin** with a wet bandana or washcloth. Resting with damp skin cools your body as water evaporates. For longer lasting cooling, buy an "evaporative cooling" bandana, which stays wet for hours.
- ✓ **Dampen your bed sheets** and place a fan at the end of your bed to keep cool throughout the night. Place an frozen water bottle in your bed, wrapped in a thin towel. Cotton sheets are best.
- ✓ **Postpone all heat-producing indoor activities** to evening hours. Cook meals ahead of time, at night. Reheat meals with a microwave or serve cool.
- ✓ **Hang a thin wet sheet** or wet laundry in front of a window or fan so the air blowing inwards is cooled.

**Move Air to Keep Cool**

- ✓ **Install ceiling fans.** Use fans while running your AC to boost the cooling effect. The breeze from the fan creates a wind chill that allows you to run the AC at a higher temperature while still keeping cool.
- ✓ **Place a box fan in a window at night** to bring cool air inside. Purchase window locks (\$1+) if you're concerned about leaving windows open.
- ✓ **Create a cross breeze** by opening doors or windows on opposite sides of the room.
- ✓ **Turn on built-in exhaust fans**, like those in the bathroom and kitchen, when indoor air is hotter than outside.

**Get somewhere cool.**  
Cooling centers are local city resources providing air conditioning and water for everyone during heat events.  
Check [fresno.gov/parks/cooling-centers/](https://fresno.gov/parks/cooling-centers/) for locations near you.  
Also, visit friends/family, libraries, community/senior centers, or shopping centers to keep cool.

Using a ceiling fan can make you feel up to 4°F cooler.

Put box fans in open windows

**BERKELEY LAB**  
**CALIFORNIA STRATEGIC GROWTH COUNCIL**  
**INDICIA Consulting**  
**Family Resource Center**

## Integrate Meaningful Engagement

Integrated equity considerations with community outreach and community stakeholder partnerships

- Data collection from outreach validated modeling assumptions
  - Community meetings (2), focus groups (4), in-home interviews (11) and phone interviews (88)
- Informed researchers on coping strategies, barriers and challenges, as well as cooling measures

# Participatory Research to Policy Model



Research is most impactful when it informs and **supports the development and implementation of community solutions**

# Participatory Research to Policy Model



Examples of **community solutions**:

- Identify and promote policy applications
- Develop tools that aid in decision making
- Utilizing data to support communities in securing funding for planning and implementation
- Create and test pilots that can be scaled and disseminated
- Share results with decision makers

# CCR Grantee Example: Smoke, Air, Fire, and Energy (SAFE) Project

## Pilot/Advance Community Solutions

- **Responding** to Blue Lake Rancheria and Karuk Tribes' concerns about energy resilience in the face of the increased threat of wildfire
- Ground-truthed processes to ensure developing technology is consistent with **community needs and context**
- **Developed key tools** to demonstrate to **key decision-makers** at PG&E that seamless transitions to microgrids are possible
- Using lessons learned to **scale** clean energy solutions to other Tribes statewide through funding CEC to the USDOE "GRIP" program





# Refining and Scaling the PRP Model

	UC Davis Center for Regional Change \$50,000	UC Office of the President \$200,000	CSU Water Advocacy Towards Education and Research \$50,000
Goals	Identify Research and Community partnerships embedding the <b>PRP</b> Model	Provide supplemental research awards to researchers with robust community engagement	Develop tools and metrics for evaluating the implementation of the <b>PRP</b> Model
Impacts	Produce a network of researchers and community experts to continually refine the PRP model	Recognize the integration of meaningful community engagement as a critical aspect of research	Build the critical tools metrics to adapt and scale the PRP model for future use by the State



# Adapting the PRP Model for the 5th Climate Change Assessment



CALIFORNIA  
STRATEGIC  
GROWTH  
COUNCIL



CALIFORNIA  
NATURAL  
RESOURCES  
AGENCY



CALIFORNIA  
STRATEGIC  
GROWTH  
COUNCIL

# Learn more about CCR and Our Funded Projects:

Email: [Montrai.spikes@sgc.ca.gov](mailto:Montrai.spikes@sgc.ca.gov)  
[research@sgc.ca.gov](mailto:research@sgc.ca.gov)

Website: [sgc.ca.gov/programs/climate-research/](http://sgc.ca.gov/programs/climate-research/)

Exit Presentations:

[California Strategic Growth Council YouTube Channel](#)

