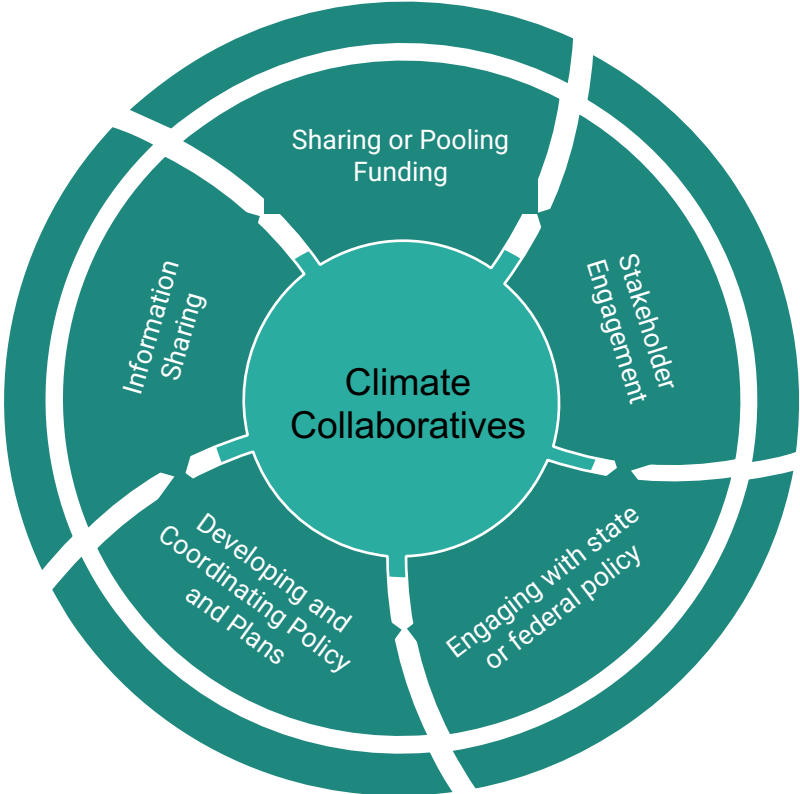


A person is standing on a rocky cliff overlooking the ocean. The person is wearing a dark jacket and a hat, and is holding a bag. The cliff is made of grey rock and has some green vegetation on top. The ocean is a deep blue color, and the sky is a pale blue. In the background, there are more hills and cliffs.

Collaborative Governance To Advance Equitable Solutions

Carolyn Yvellez (Moderator) Farallon Strategies, Project and Strategy Lead

Purpose of Regional Climate Collaboratives



Regional Governance Structures

1

Regulatory Body

The organization has been granted the authority to act as a government.

2

Legal Entity

The network is a formal legal entity which includes the ability to fund initiatives and hire staff.

3

Chartered Networks

The network has developed a charter of other system or agreed upon rules that specified governance.

4

Informal Network

A group of regional actors who agree to meet regularly to work together towards a shared goal.

Today's Featured Collaboratives

1. Capital Region Climate Readiness Collaborative
2. Yolo County Climate Action Commission
3. Santa Clara County Climate Collaborative
4. Bay Area Climate Adaptation Network

Panelists



Julia Kim (She/Her)

Climate Change & Energy Program Director, ARCCA

Julia joined CivicWell, formerly the Local Government Commission, in 2015 and currently serves as the Climate Change & Energy Program Director. In this role, she designs, facilitates, and implements a variety of capacity-building programs, regional and statewide collaboratives, advocacy campaigns, and both field-wide and place-based initiatives to advance equitable climate resilience solutions throughout California. She's fortunate enough to work with an exceptionally talented team and a diverse coalition of partners to meet the challenges of today while creating pathways for a brighter tomorrow.

Julia received a B.A. in political science and a Master's in environmental policy, both from the University of Maryland, College Park. On a more personal note, Julia recently relocated to the Santa Cruz Mountains to live off-grid and enjoy a calmer life. She enjoys traveling, making music, and spending time outdoors, and depending on the season, her days off are typically spent surfing, snowboarding, or camping.

Panelists



Kristen Wraithwall (She/Her) *Sustainability Manager, Yolo County*

Kristen Wraithwall (she/her) is the Sustainability Manager for Yolo County, California, where she oversees the County's Climate Action and Adaptation Planning process as well as other sustainability and climate programs. Kristen has worked on climate change, land use planning, and food systems initiatives with public agencies in California, Connecticut, and Massachusetts and previously managed a California statewide AmeriCorps program focused on building local community resilience. Kristen is a mom who is passionate about building a more sustainable and equitable California for future generations. She holds a Master of Environmental Management from Yale University and a Bachelor of Environmental Science and Public Policy from Harvard University.

Panelists

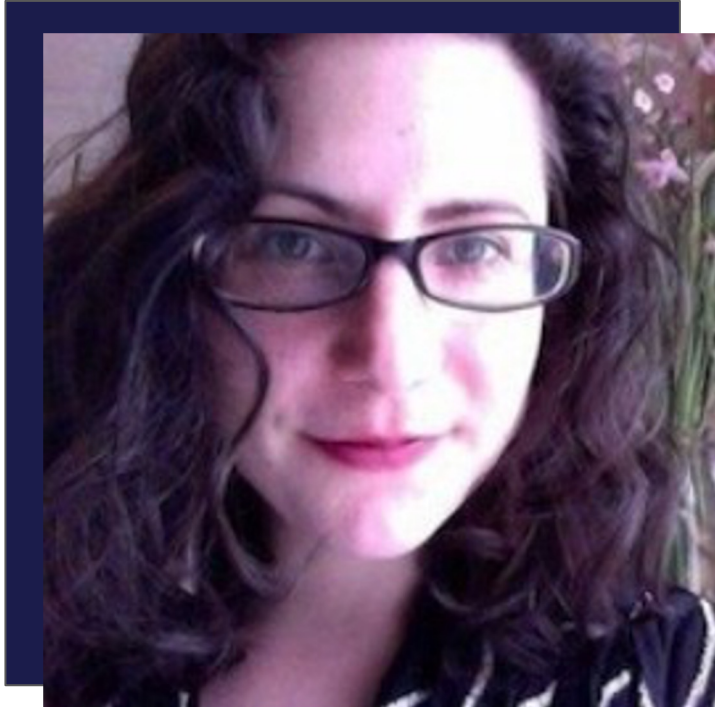


Eena Sta Maria (She/Her)

Sr. Sustainability Analyst, County of Santa Clara

Magdalena “Eena” Sta Maria is a Senior Sustainability Analyst with the County of Santa Clara where she leads climate resilience and adaptation efforts out of the Office of Sustainability. She is currently coordinating and co-managing the Santa Clara County Climate Collaborative, which is a cross-sector network and community of practice for public agencies, academia, nonprofit and community-based organizations, and business and community leaders to advance regional solutions to climate change through resource and expertise sharing, joint-funding opportunities, and partnership development. She manages projects to support climate adaptation planning, such as the Silicon Valley 2.0 Climate Change Preparedness Tool, and provides climate resilience expertise to County planning projects such as the Safety Element and Multi-jurisdictional Hazard Mitigation Plan updates. She has extensive background in scientific research and has a PhD in Civil and Environmental Engineering.

Panelists



Sarah Church (She/Her)

Sustainability Manager, Bay Area Climate Adaptation Network (BayCAN)

Sarah Church, Sustainability Project Manager, leads climate change mitigation, resource conservation and waste prevention at California's Alameda County by facilitating behavior change among the county's 9500 employees and helping to green its multi-million-dollar contracts. She has advised seven U.S. states and numerous local governments on the cutting edge of sustainable and socially just procurement over a decade, as staff at Responsible Purchasing Network and through Board leadership at SweatFree Communities. Sarah has co-authored several national guides and reports to facilitate sustainable purchasing, with a focus on food, food service ware, and furniture. She currently coordinates the County's Green Purchasing Roundtable, a resource and network for local institutions.