

Advancing Indigenous Stewardship of All Ancestral Lands

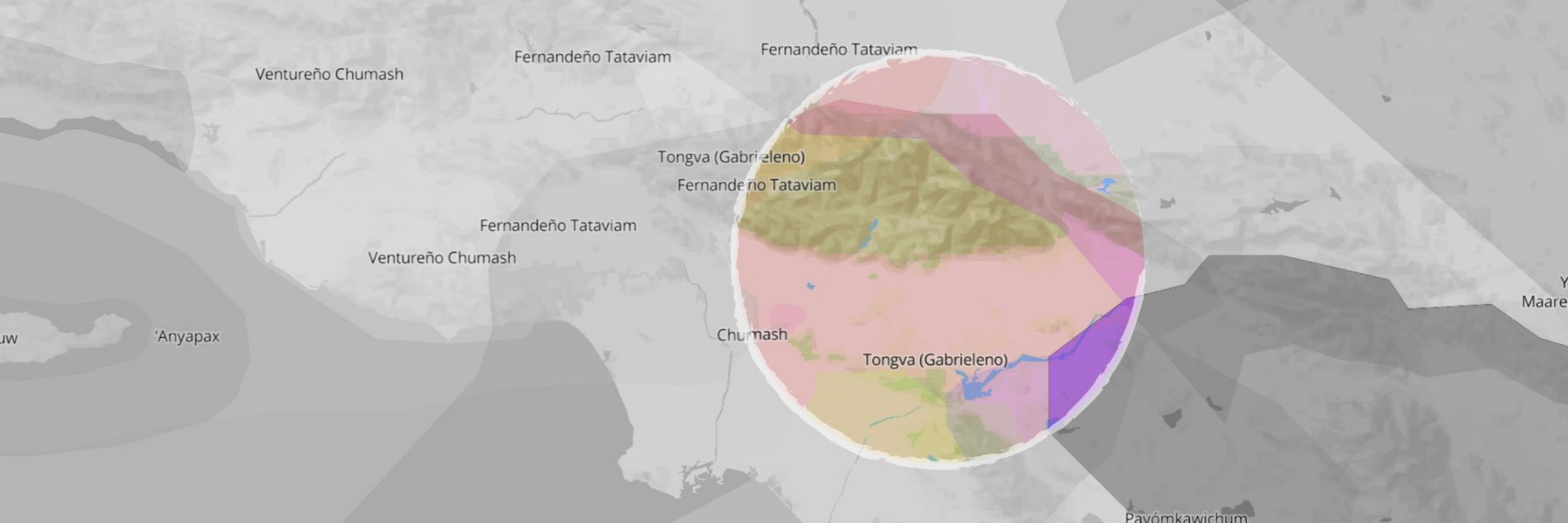
Welcome! We will begin shortly.

Photo by Madison Wilson



CLIMATE
SCIENCE
ALLIANCE

California Adaptation Forum | August 1, 2023



The Climate Science Alliance acknowledges the Indigenous peoples on whose traditional territory we work and live. We honor the continued presence and resilience of Indigenous communities and nations today, and thank those we work with for your friendship and your good will in our efforts to collaborate.





How are you feeling today?

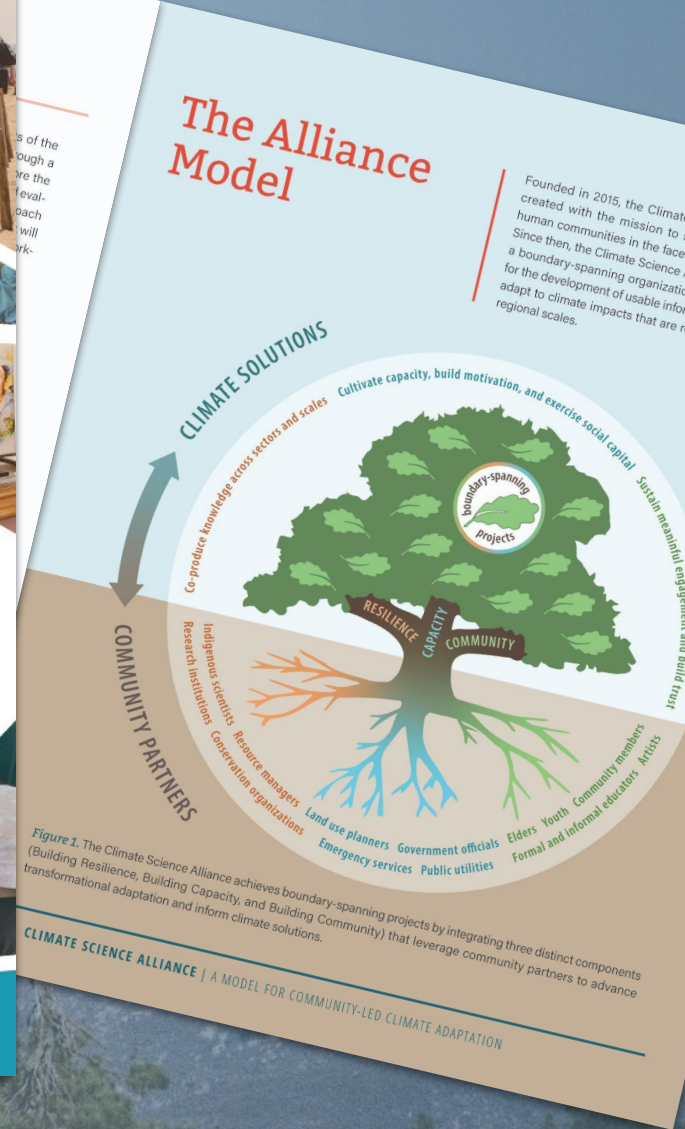
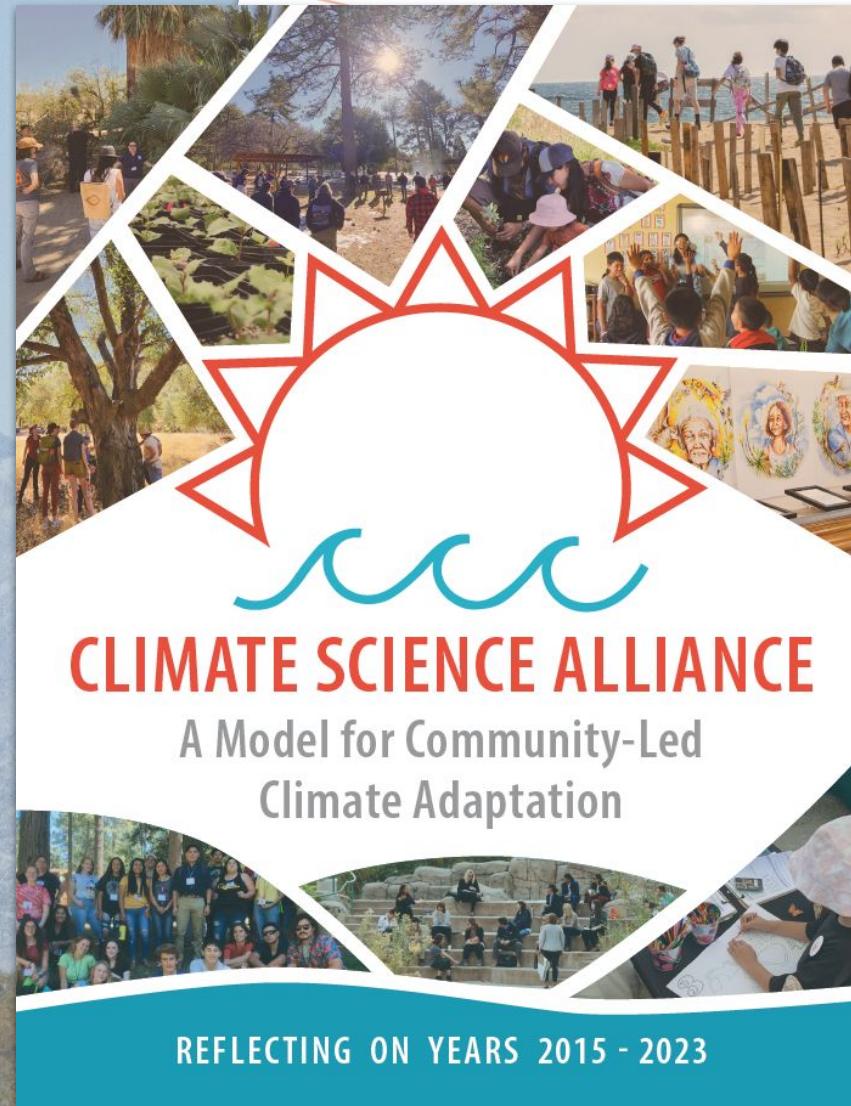


Do you know whose land you live and work on?



Have you worked with Tribes beyond what's legally required?

Our Model for Community-Led Climate Adaptation





An Organizational Model for Meaningful Engagement

Althea Walker

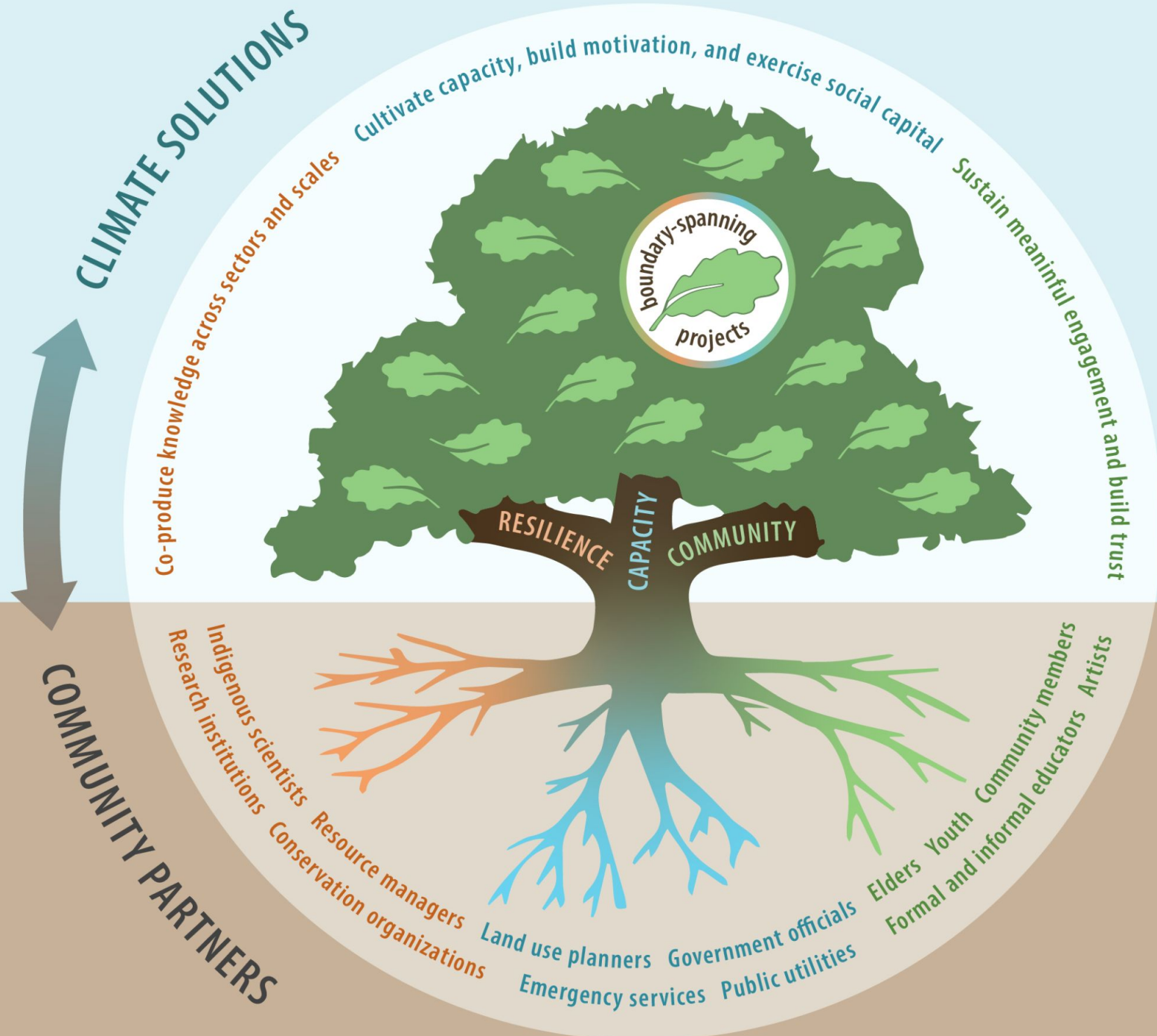
Co-Director and Community Resilience Lead
Climate Science Alliance

*View our meaningful
engagement resource guide*



[www.climatealliance.org/
info/meaningful-engagement](http://www.climatealliance.org/info/meaningful-engagement)





*Collaborative of Native Nations
for Climate Transformation and
Stewardship (CNNCTS)*

CNNCTS



Advance science-informed climate action

Translate knowledges to practice

Put adaptation in action

Expand landscape stewardship pathways

Support social entrepreneurship



align

equity

social infrastructure

steward

sustain

shared values

activate

knowledges

action

community engagement

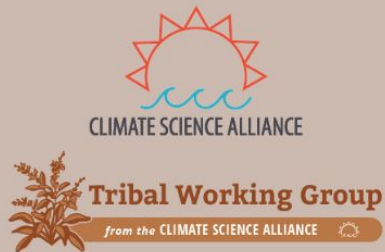
align

sovereignty

strengthen

FOUNDATIONAL PARTNERS

SDSU San Diego State University




UC RIVERSIDE **UC SANTA BARBARA**



CALIFORNIA STATE UNIVERSITY
LONG BEACH





Collaborative of Native Nations for Climate Transformation and Stewardship (CNNCTS)

Megan Jennings

Co-Director

Institute for Ecological Monitoring and
Management, San Diego State University




Indigenizing approaches to accelerate climate adaptation actions

Will Madrigal, Jr.

Tribal Capacities and
Partnerships Program Manager,
Climate Science Alliance





Building the capacity of Native Nations and Indigenous Peoples to protect sacred lands, waters, and cultures

Angela Mooney D'arcy

Executive Director,
Sacred Places Institute for
Indigenous Peoples



SACRED PLACES INSTITUTE
FOR INDIGENOUS PEOPLES



Panel Discussion

- What has been a key learning moment? A challenge that has led to growth and new understanding. How did you move forward through that?
- How has working collaboratively impacted your work?
- Why is this important for advancing equitable climate adaptation actions?





Thank you

Althea Walker

Co-Director and Community Resilience
Lead, Climate Science Alliance

Megan Jennings

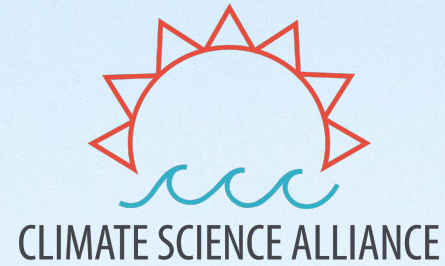
Co-Director, IEMM at San Diego State
University

Will Madrigal, Jr.

Tribal Capacities & Partnerships Program
Manager, Climate Science Alliance

Angela Mooney D'arcy

Executive Director, Sacred Places
Institute for Indigenous Peoples



Thank you!

Questions? Contact info@climatesciencealliance.org

Photo by Madison Wilson



Advancing Indigenous Stewardship of All Ancestral Lands