

# Climate-Smart Los Angeles

*Data & Partnerships to keep LA cool*

**Fernando Cazares**

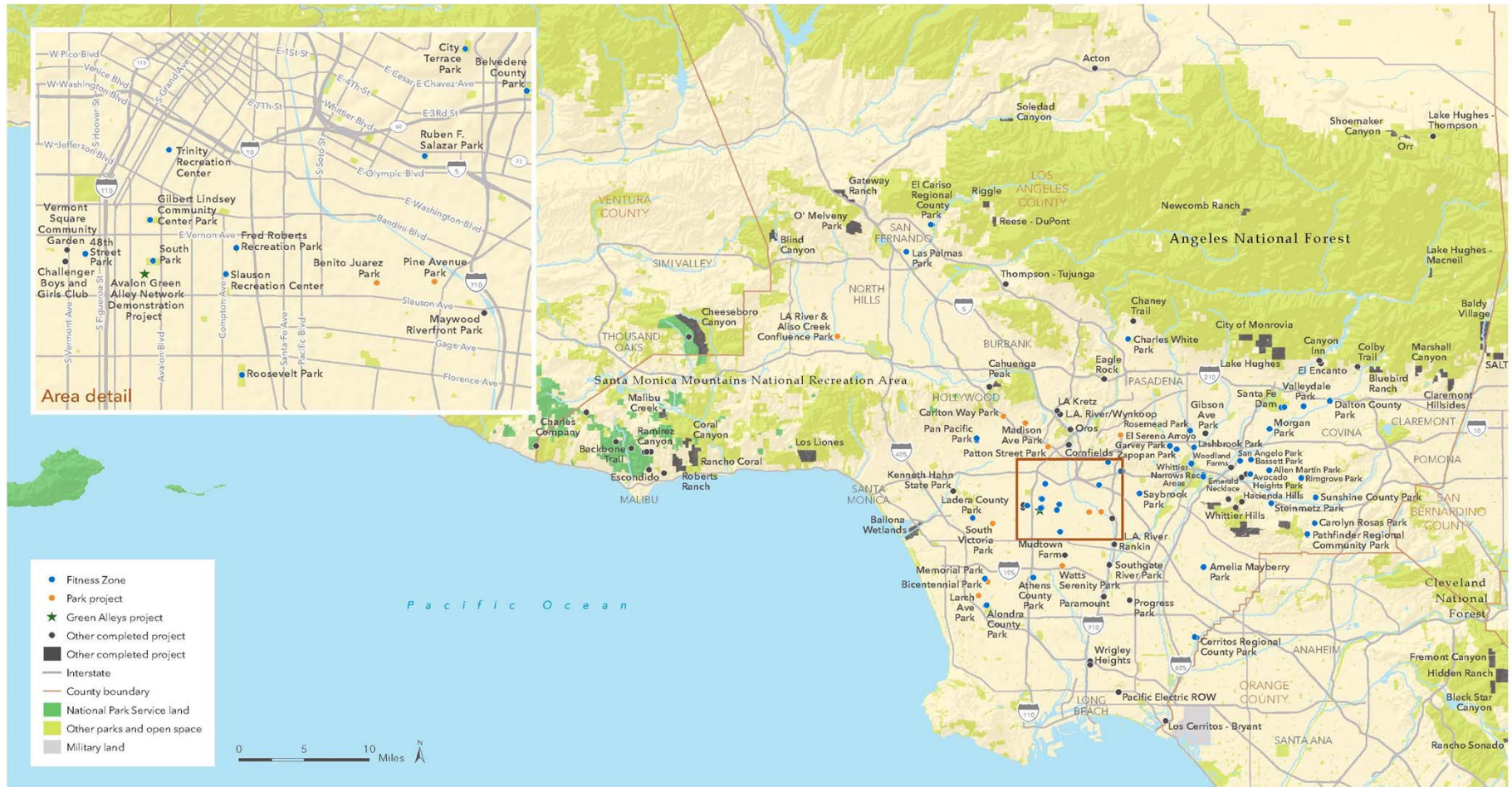
California Manager, Climate-Smart Cities

[Fernando.cazares@tpl.org](mailto:Fernando.cazares@tpl.org)

September 8, 2016



# TPL Projects & Initiatives in LA Region



## Los Angeles

COMPLETED PROJECTS



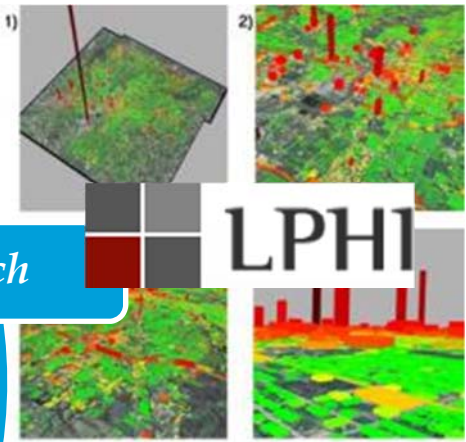
December 17, 2015

Copyright © The Trust for Public Land. The Trust for Public Land and The Trust for Public Land logo are trademarks of The Trust for Public Land. Information on this map is provided for purposes of discussion and visualization only. [www.tpl.org](http://www.tpl.org)

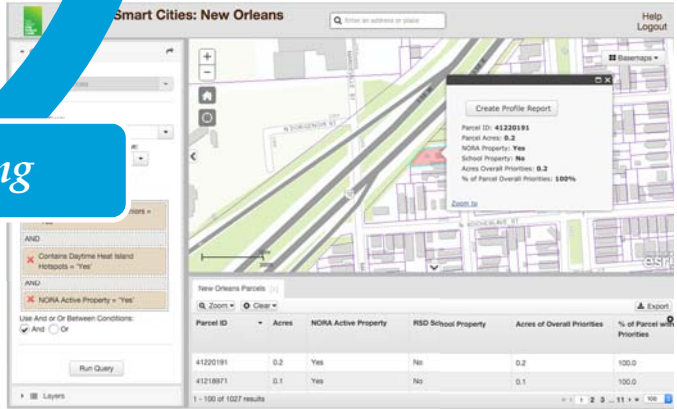
# Climate-Smart Cities Partnerships – Our Integrated Approach



CSC Partnership



Research



Planning

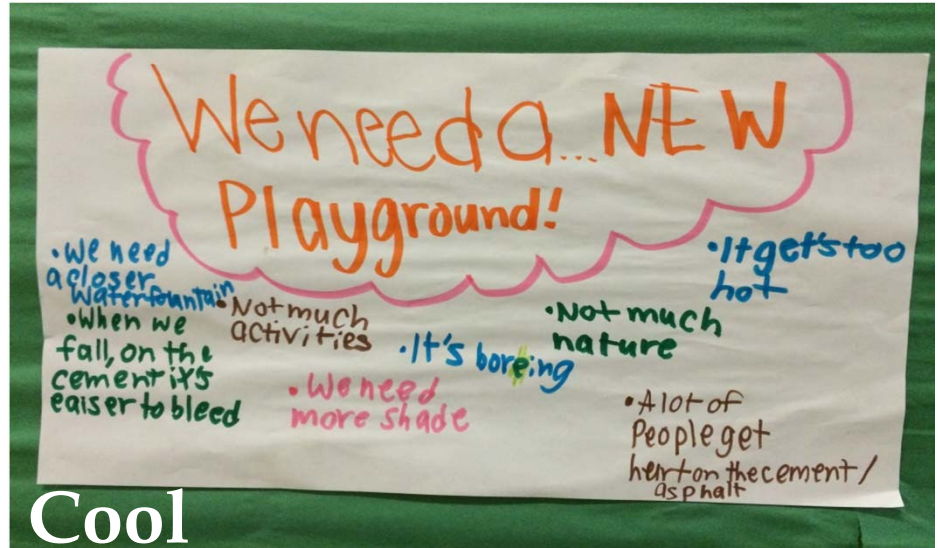
Finance

Implementation





Connect



Cool



Absorb



Protect

# Our Climate-Smart Cities Framework

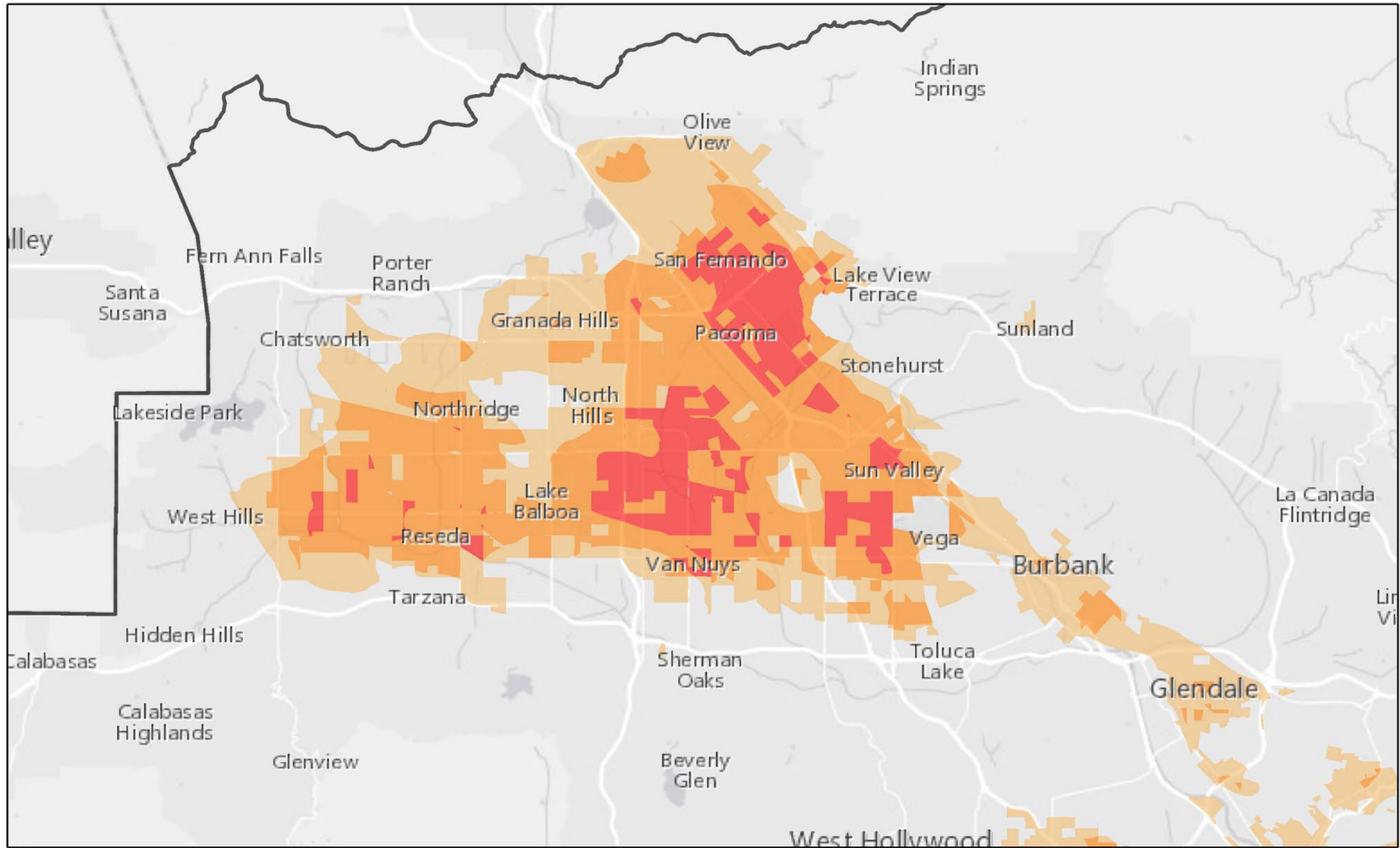
10X Increase in Heat-Related Deaths by 2057



Heat Hits Hardest for Low Income and Elderly

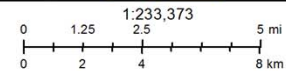


# Climate Smart Cities - San Fernando Valley Cool & Social Vulnerability



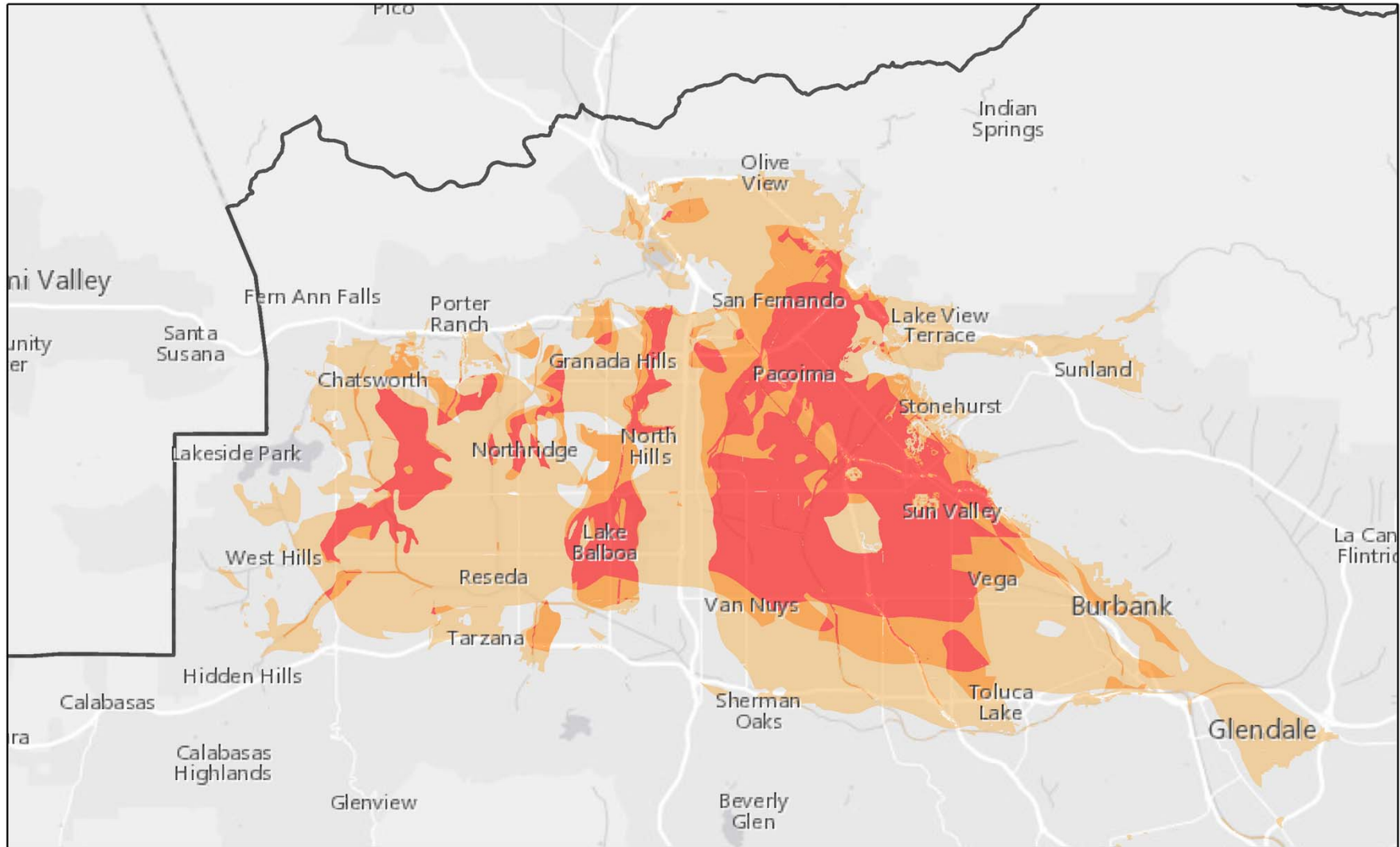
August 30, 2016

□ Study Area



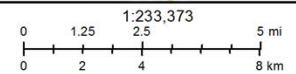
The Trust for Public Land  
Copyright 2015

# Climate Smart Cities - San Fernando Valley Cool & Absorb



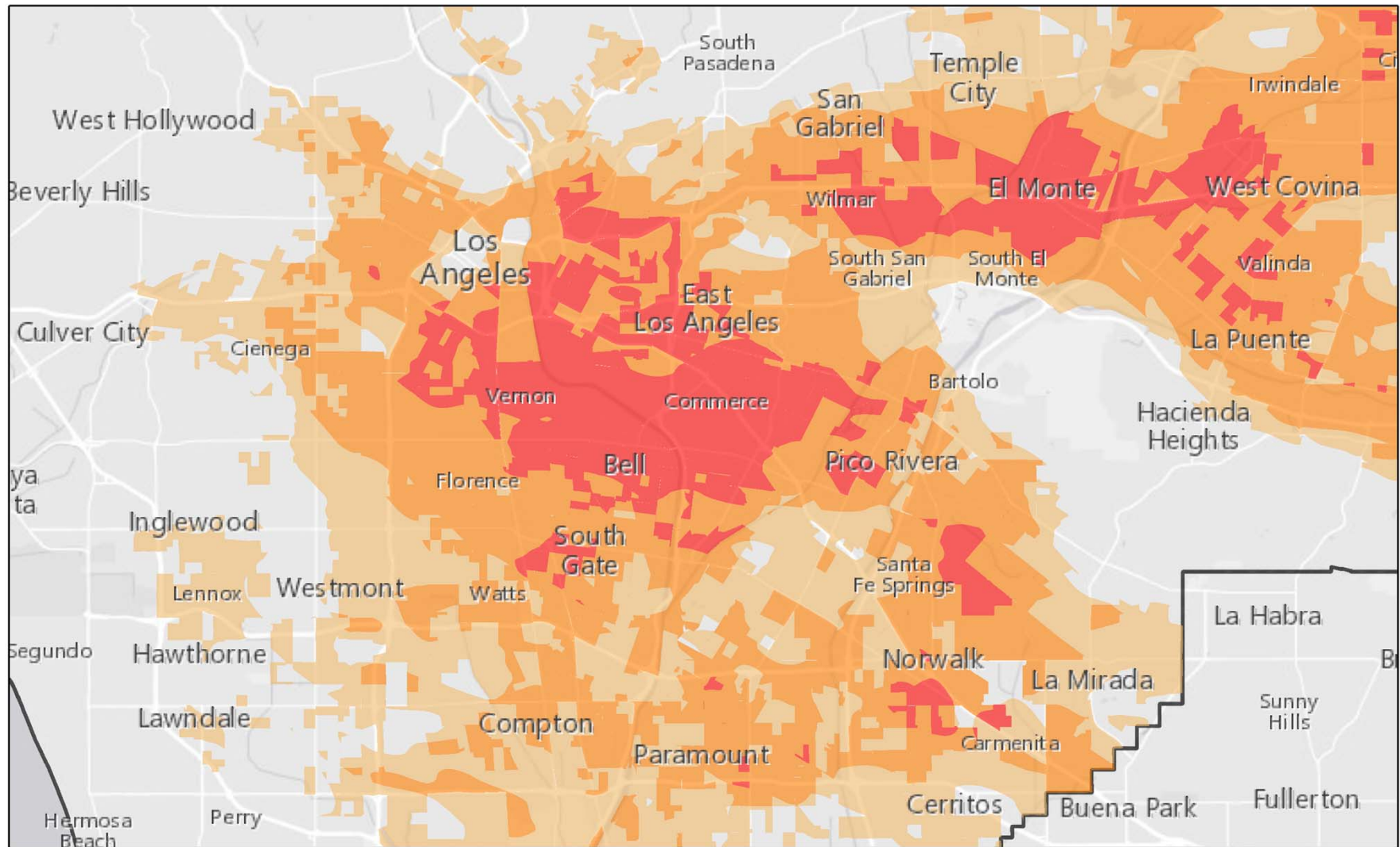
August 30, 2016

□ Study Area



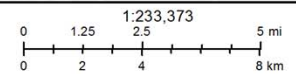
The Trust for Public Land  
Copyright 2015

# Climate Smart Cities - LA Cool & Social Vulnerability



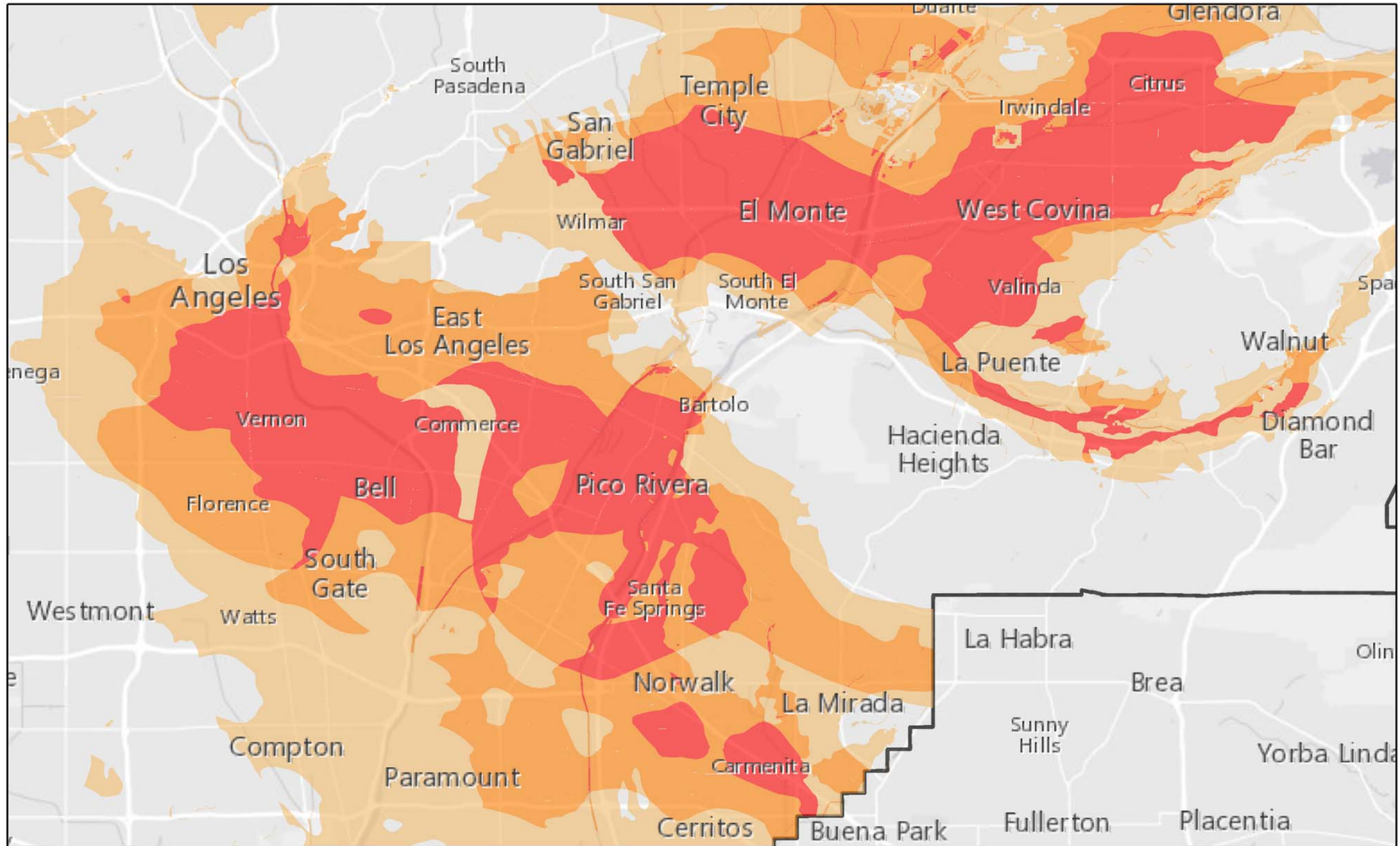
August 30, 2016

□ Study Area



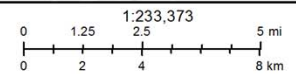
The Trust for Public Land  
Copyright 2015

# Climate Smart Cities - LA Cool & Absorb



August 30, 2016

□ Study Area



The Trust for Public Land  
Copyright 2015

# Data, Policy, and Partnership Synergies

---

- Data & Planning
  - Climate-Smart Cities LA Decision Support Tool
  - TreePeople's Tree Map & Co-Investment Tool
  - Public Health Alliance's Health Disadvantage Index
  - Greenways to Rivers Arterial Stormwater System
- Policy:
  - Sustainability pLAn Goals
  - County CAP goals, including UHI mitigation
  - Los Angeles Regional Collaborative
- Community
  - Environmental Justice
  - Mobility & Public Health Advocacy

# Upcoming Opportunities

---

# EnviroMetro ✓

— LOS ANGELES' COALITION FOR GREEN —  
EQUITABLE & HEALTHY TRANSPORTATION



# #OUR PARKS

Greater Los Angeles

THE  
TRUST  
FOR  
PUBLIC  
LAND