

ENVIRONMENT

Climate, Resources, Environmental Health



Local Water



Local Solar



Energy-Efficient Buildings



Carbon & Climate Leadership



Waste & Landfills

ECONOMY

Housing, Mobility, Resilience



Housing & Development



Mobility & Transit



Prosperity & Green Jobs



Preparedness & Resiliency

EQUITY

Access, Public Health, Connectivity



Air Quality



Environmental Justice



Urban Ecosystem



Livable Neighborhoods



Lead By Example

PLAN FRAMEWORK



VISION

What LA will be in
20 years



OUTCOMES

Measurable goals toward
2017, 2025, 2035



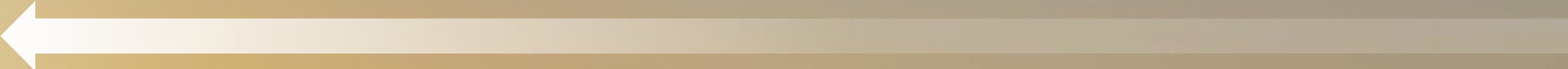
STRATEGIES

Groups of initiatives
driving toward outcomes



INITIATIVES

Specific, actionable
initiatives and tools



First Annual pLAn Report

Angelenos Have Reduced Their Water Usage By 19%.

Thanks to the efforts of Angelenos to respond to the call for conservation and the Save the Drop campaign, Over 30.4 billion gallons have been saved in L.A. since November 2014. That is equivalent to four billion cubic feet, which would fill the entire Rose Bowl 200 times!



Local Water

Raised minimum wage to \$15/hour

Landmark \$15/hr minimum wage passed. (June 13, 2015)



Clean Up Green Up Ordinance Passed

In April 2016, City Council approved the Clean Up Green Up ordinance, which the Mayor signed on April 22, 2016.

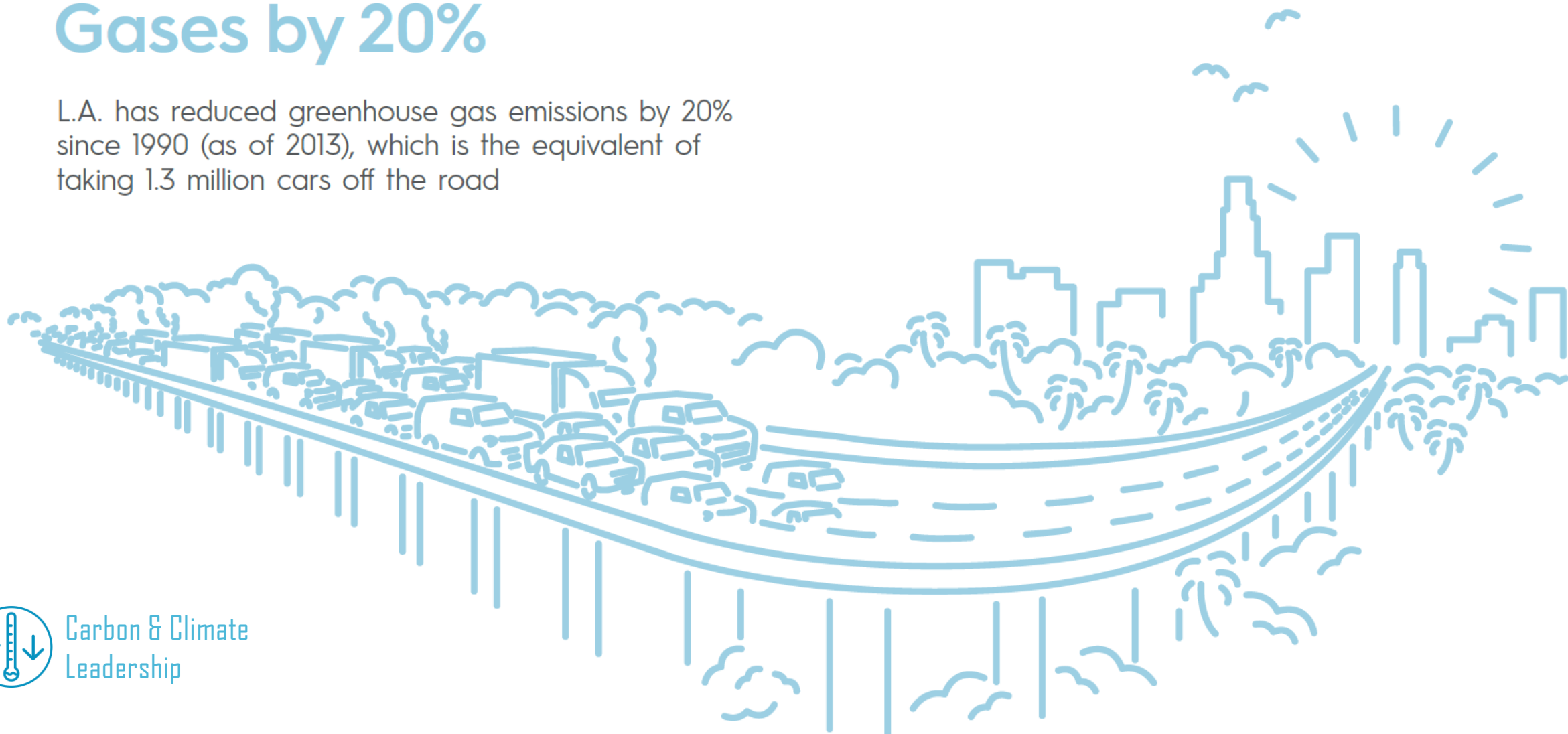


Environmental Justice

ENVIRONMENT

L.A. Reduced Greenhouse Gases by 20%

L.A. has reduced greenhouse gas emissions by 20% since 1990 (as of 2013), which is the equivalent of taking 1.3 million cars off the road



Carbon & Climate
Leadership

L.A. Has the Most Installed Solar of Any City in the Country

To date, L.A. has over 180 MW of installed local solar, enough to power **50,000 homes**.

(Source: Los Angeles Department of Water and Power, March 2016)



Local Solar

Progress on Selected pLAn Outcomes

2017



Lead mayors of largest U.S. cities to sign on to Mayors' National Climate Action Agreement

34 mayors have now joined forces to improve municipal GHG inventories, support the Paris climate agreement and Clean Power Plan, and address critical issues like methane rules.



Replace 95 miles of water pipe infrastructure.

L.A. has replaced 38 miles of water main.

(Source: L.A. Department of Water and Power, January 2016)



Expand Los Angeles Better Buildings Challenge (LABBC) to 60 million square feet

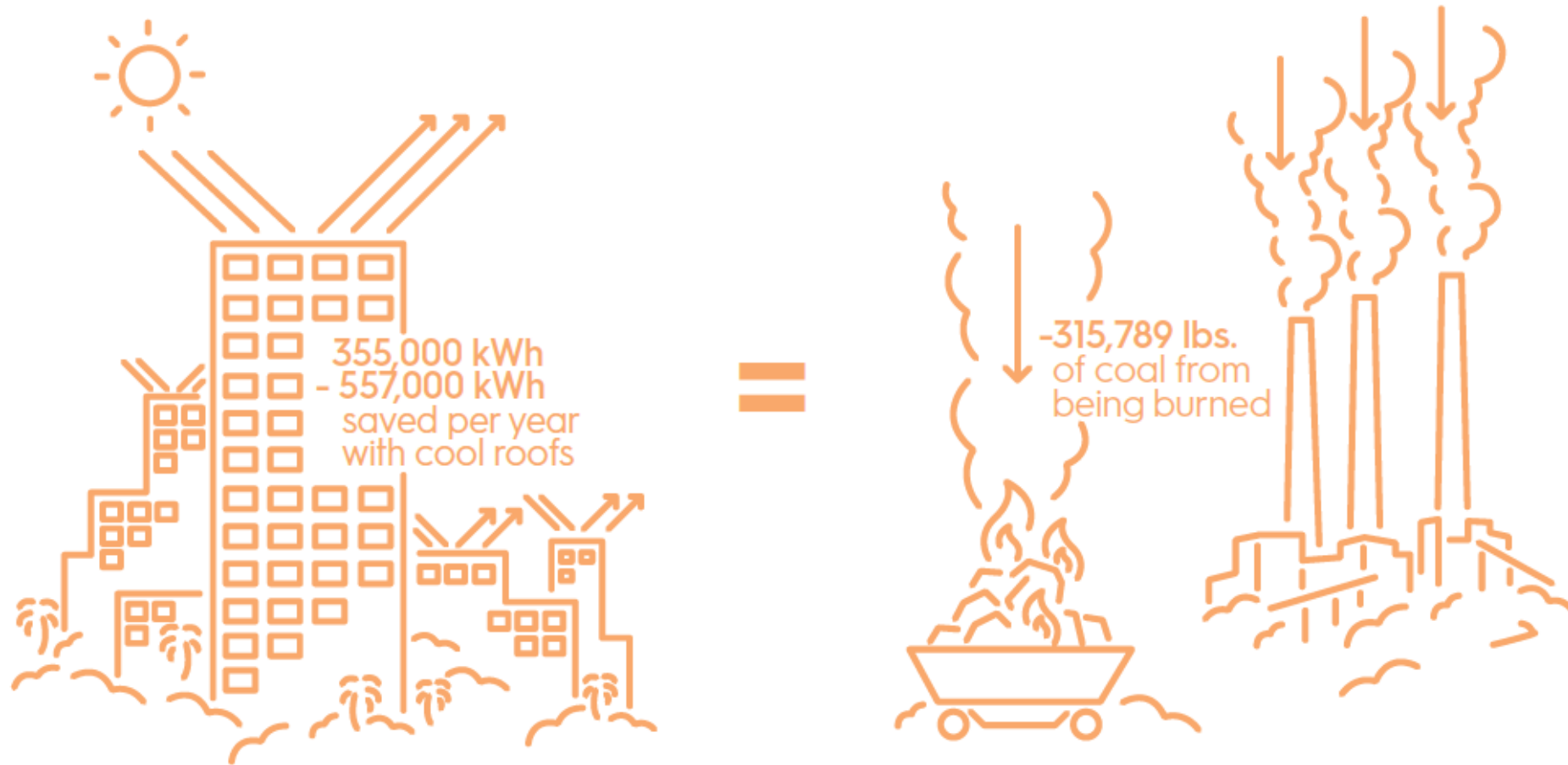
Over 27 million square feet enrolled in the LABBC this year. In combination with an existing 40 million, L.A. is surpassing the 2017 outcome ahead of schedule.

(Source: LABBC, January 2016)

ECONOMY

Helping Make L.A. Cooler

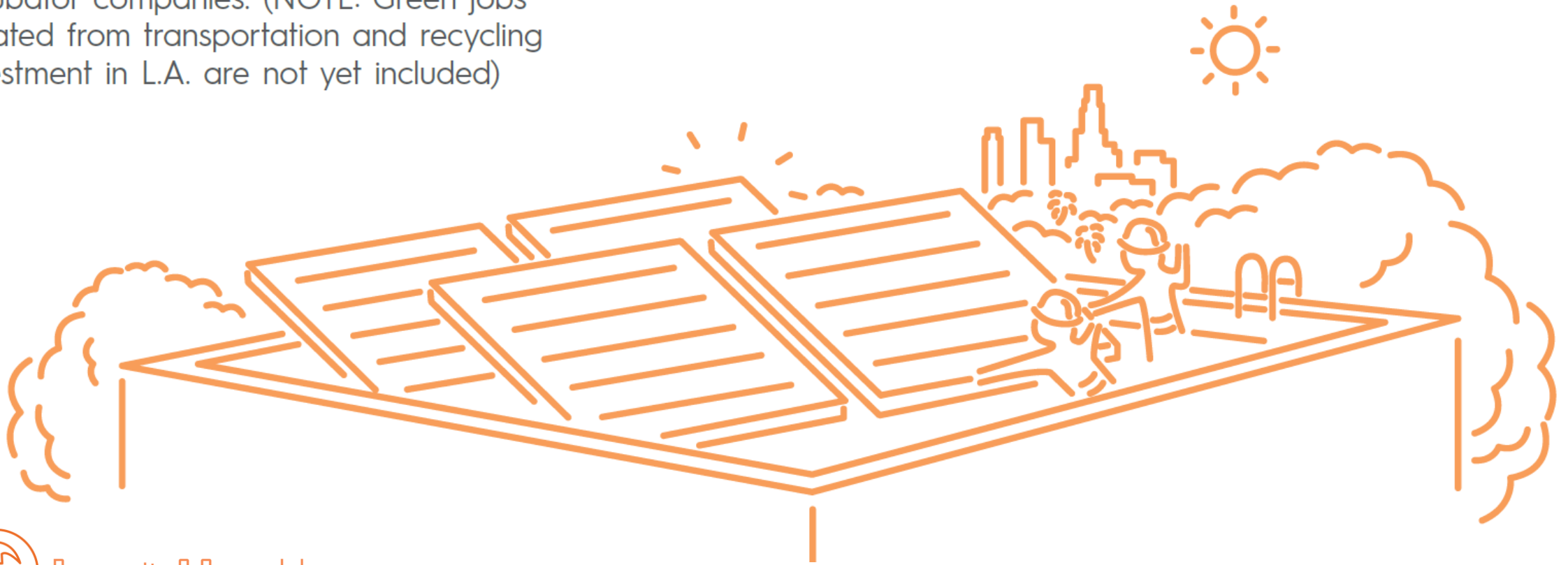
Cool roofs installed since 2015 are saving 187 - 294 metric tons of CO2e annually, equivalent to planting up to 7,500 trees.



Preparedness & Resiliency

9,676 Green Jobs Created

Since July 2013, analysis shows that 9,696 green jobs have been created in Los Angeles from the solar, energy efficiency, and water sectors, as well as from LA Clean Tech Incubator companies. (NOTE: Green jobs created from transportation and recycling investment in L.A. are not yet included)



Progress on Selected pLAn Outcomes

2017



Increase cumulative new housing unit construction by 37,500, on way to 2021 goal of 100,000 units*

The City has permitted 37,702 units from July 2013 to December 2015, putting us on track to meet this goal.

(Source: L.A. Department of Building and Safety)*

*This outcome reflects 2017 interim progress toward the 2021 and 2025 Outcome for New Housing.



Achieve \$100 million of green investment through the LA Cleantech Incubator (LACI)

Through the end of 2015, LACI portfolio companies have raised over \$70 million.

(Source: LACI, January 2016)



Establish bike share system in L.A. starting with at least 65 stations and 1,000 bicycles

The Mayor's Office & LADOT worked with Metro to select the provider for L.A.'s downtown bike share program, which is set to launch Summer 2016, with 80 stations and 1,090 bicycles.

EQUITY

Charging the Electric Revolution

Installed 1,024 electric charging stations;
over 300 on City property.

1,024 publicly available EV charging stations
are now installed in L.A., which includes 300 on
City property and meets the 2017 goal early

(Source: L.A. Department of Water and Power)



Air Quality

L.A. Built 10 New Parks This Year

25,457 Angelenos
gained park access
within the last year.



Urban Ecosystem

Progress on Selected pLAn Outcomes

2017



Create 5 additional miles of L.A. River public access

1.5 miles of new access completed or in construction.

(Source: L.A. RiverWorks, Mayor's Office)



Implement Clean Up Green Up program

In April 2016, City Council approved the Clean Up Green Up ordinance, which the Mayor signed on April 22, 2016.



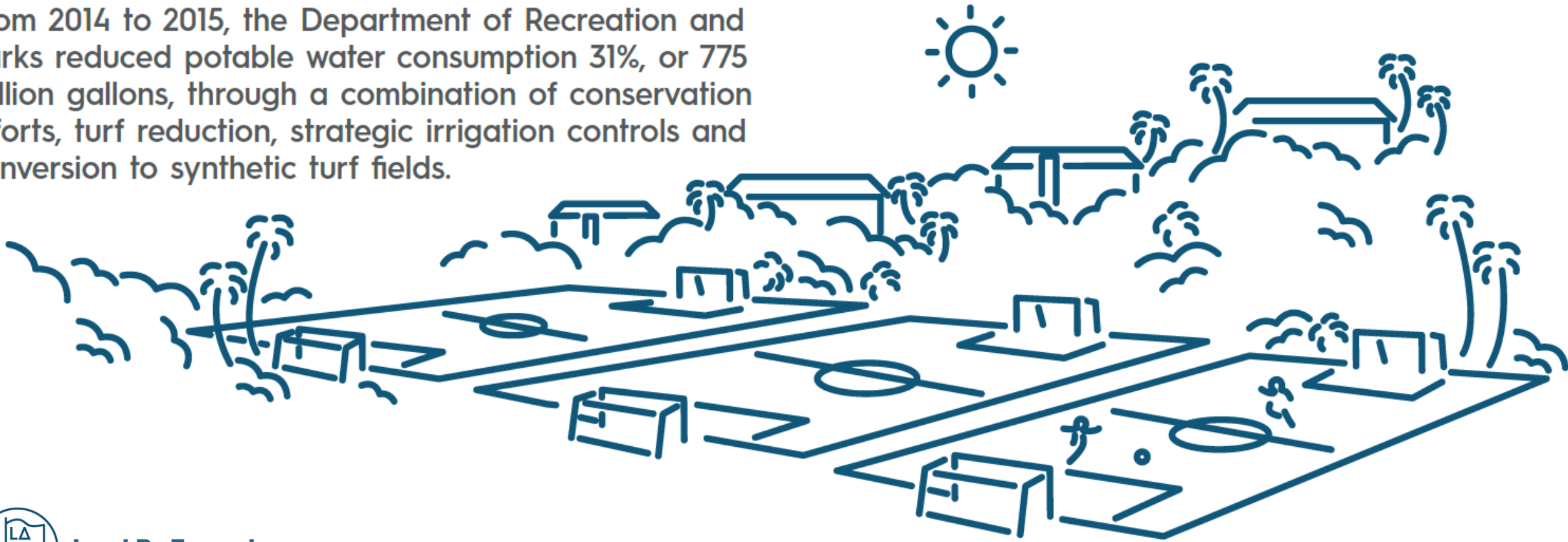
Implement improvements on 15 commercial corridors/ Great Streets

In 2015, Challenge grants were awarded to implement and improve safety and livability to 8 Great Streets to test successful elements to implement and improve safety.

LEAD BY EXAMPLE

775 Million Gallons of Water Saved

From 2014 to 2015, the Department of Recreation and Parks reduced potable water consumption 31%, or 775 million gallons, through a combination of conservation efforts, turf reduction, strategic irrigation controls and conversion to synthetic turf fields.



Progress on Selected pLAn Outcomes

2017



City departments have reduced water consumption by 36% across facilities.*

*This does not include proprietary departments or Recreation and Parks.

(Source: L.A. Department of Water and Power)



Ensure that 50% of the City's light-duty vehicle purchases are zero emission

The City has purchased or procured 275 sedans in 2015-16, of which 160 are pure battery electric vehicles, 58% of all new fleet sedans

(Source: L.A. Mayor's Office)



Be a Top 10 city as rated by the ACEEE City Scorecard

From 2013 to 2015 Los Angeles was the most improved city, moving from number 28 to number 12 on the ACEEE list out of 51 cities.

(Source: American Council for an Energy-Efficient Economy)



Lead By Example

GREEN INFRASTRUCTURE

GREEN INFRASTRUCTURE AND WATERSHED MANAGEMENT

YIELDS MULTIPLE BENEFITS

- Improve water quality
- Increase water supply
- Reduce flooding
- Save on energy use
- Reduce heat island effect
- Enhance wildlife
- Provide open space for habitat and recreation





***During
Construction***



***Parkway Infiltration Swale
11th St & Hope St – Los Angeles***



Garvanza Stormwater Park



***Porous Pavement – Rio
del Los Angeles State
Park
(aka: Taylor Yard)***



plan.lamayor.org | [#adopttheplan](https://twitter.com/adopttheplan)